

RWD

# RWD VETERINARY PRODUCT CATALOG



RWD Life Science

# Introduction

Founded in 2002, RWD Life Science is specialized in Animal Healthcare, Life Science and Medical Devices. Headquartered in Shenzhen, our products and services have been exported to over 100 countries and regions.

While dedicated to improving the quality of life, we are also firmly committed to being a leading global science enterprise. Oriented by customer demands and motivated by excellent talents, RWD is always working together with labs & universities, and investing into R&D to achieve the innovation in our products, technologies and service, and to provide our customers with higher- quality solutions.

Being based in China and serving the world, RWD has not only achieved a strong reputation with advantages in the field of veterinary inhalation anesthesia system, lab research and surgery instrument, but also gained long-term trust and support from customers all over the world in the past 18 years.

Looking into the future, we shall adhere to our core values “Quality, Integrity, Responsibility”, and also contribute to the development of pre-clinic and medical clinic applications in the international market.



# Content

<b>01/</b>	<b>Anesthesia Machine</b> .....	<b>01</b>
	R620-S1 Veterinary Anesthesia Machine	
	R640-S1 Economical Veterinary Anesthesia Machine	
	RSA Small Pet Anesthesia Machine	
	R640 Flexible Veterinary Anesthesia Machine-Wall Mount	
	R620-MRI MR Conditional Animal Anesthesia Machine	
	R630 Dual-drug Veterinary Anesthesia Machine	
	R610 Veterinary Anesthesia Machine- Tabletop	
<b>02/</b>	<b>Ventilator</b> .....	<b>08</b>
	R419 Intelligent Animal Ventilator	
	RSV Small Animal Ventilator	
<b>03/</b>	<b>Monitor</b> .....	<b>10</b>
	Veterinary Multi-parameter Monitor	
	RM-C1 Veterinary Capnograph	
<b>04/</b>	<b>Gas Supply</b> .....	<b>12</b>
	ROC-5A Veterinary Oxygen Concentrator	
	Anesthesia Air Pump	
<b>05/</b>	<b>Veterinary Dental Units</b> .....	<b>13</b>
	D-Pro Veterinary Dental Unit	
	D-U2000 Flexible Veterinary Dental Unit	
<b>06/</b>	<b>Dental X-ray</b> .....	<b>15</b>
	D-X8V Mobile Veterinary Dental X-ray	
	D-X2V Portable Veterinary Dental X-ray	
<b>07/</b>	<b>Ultrasonic Scaler</b> .....	<b>16</b>
	D-VS Veterinary Ultrasonic Scaler	
<b>08/</b>	<b>Laser Therapy</b> .....	<b>17</b>
	RLT-24 Veterinary Laser Therapy	
<b>09/</b>	<b>ICU</b> .....	<b>18</b>
	R-CU510 Smart Animal ICU	
<b>10/</b>	<b>Accessories</b> .....	<b>19</b>
	Vaporizer	
	Anesthesia Induction Chambers	
	Shelf	
	Laryngoscopes	
	Toggle Switch	
	Regulator	
	Air Hose	
<b>11/</b>	<b>Disposable</b> .....	<b>22</b>
	Mask	
	Breathing Bags	
	Breathing Circuits	
	Endotracheal Tubes	
	Gas Filter Canister	
	Urinary Catheter	
<b>12/</b>	<b>Animal Surgical Instruments</b> .....	<b>25</b>
<b>13/</b>	<b>One-Stop Solution</b> .....	<b>27</b>

# Anesthesia Machine

## R620-S1 Veterinary Anesthesia Machine

R620-S1 is applicable to clinical anesthesia of dog, cats, pigs, monkeys, rodent, reptiles, birds etc. With minimal operation design, vet shall feel easy, safe and reliable to perform surgery on animals.



Circuit switch

Rail-mounted CO<sub>2</sub> absorber

APL valve

- High accuracy vaporizer
- APL valve for quick-occlusion
- Rail-mounted CO<sub>2</sub> absorber, so easy to install and disassemble
- One switch to shift between rebreathing and non-rebreathing circuits
- Shelf for placing monitor and ventilator
- Good to hang E-type oxygen cylinder, and oxygen concentrator
- Good waste gas scavenging system
- Complete function with both breathing and non-rebreathing circuits
- Five-foot base/ Four-foot base/Wall-mount Holder is available

### Order Information

Cat No.	Description
R620-S1	Veterinary Anesthesia Machine

### Included

Cat No.	Description	Remarks
R620-S1-A	R620-S1 Series Mounting Assembly with O <sub>2</sub> Flowmeter (0.1-4LPM)_EN	
R580S	Vaporizer for Isoflurane- Pour Fill- Cagemount	Can be changed to other vaporizer.
R580-IO	Vaporizer Endcaps (1 pair)	
R510-31	Gas Filter Canister, Large	
R600-ET	Cuffed Endotracheal Tubes (1 set)	
R600-NL-0.5L	Reusable Non Latex Breathing Bag, 0.5L	
R600-NL-1L	Reusable Non Latex Breathing Bag, 1L	
R600-NL-2L	Reusable Non Latex Breathing Bag, 2L	
R-BC-DL	Breathing Circuit Duo-limb, 22mm(M)/15mm(F), 1.5m	
R-NBC-F(JR)	Mapleson F Non-rebreathing Circuit (Jackson-Rees)	
R-CT-18	Corrugated Tube- ID 22.0mm, L1.2m	

# R640-S1 Flexible Veterinary Anesthesia Machine

R640-S1 is an economical machine designed with good performance but competitive price. Applicable to clinical anesthesia of dogs, cats, pigs, monkeys, rodents, reptiles, birds etc.



- Compact structure & simple operation
- Two colors: red or silver
- Support re-breathing circuit and non-rebreathing circuit (Basic configuration re-breathing circuit 1.5m)
- Pressure gauge — Constantly monitoring the circuit pressure
- Oxygen flush button — Preventing emergencies
- Red rotary float — More eye-catching and readable
- Freewheel with lock — More stable
- Five-foot base/ Four-foot base/Wall-mount Holder is available



## Order Information

Cat No.	Description
R640-S1	Flexible Veterinary Anesthesia Machine

## Included

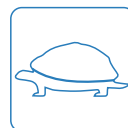
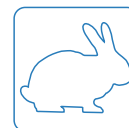
Cat No.	Description	Remarks	
R640-S1-A-S	R640-S1 Series Mounting Assembly (Silver) with O <sub>2</sub> Flowmeter (0.1-4LPM)	Can change to the red one	
R580S	Vaporizer for Isoflurane- Pour Fill- Cagemount	Can be changed	
R580-IO	Vaporizer Endcaps (1 pair)		
R600-NL-1L	Resuable Non Latex Breathing Bag, 1L		
R-BC-DL	Breathing Circuit Duo-limb, 22mm(M)/15mm(F), 1.5m		
R-CT-18	Corrugated Tube- ID 22.0mm, L1.2m		
R-NBC-F(JR)	Mapleson F Non-rebreathing Circuit (Jackson-Rees)		
R640-S1-MS-S	Monitor Shelf (for R640-S1)	Can change to the red one	Optional
R600-ET	Cuffed Endotracheal Tubes (1 set)		
R510-31	Gas Filter Canister, Large		

## RSA Small Pet Anesthesia Machine

RSA inhalation anesthesia machine is specially designed for small pets such as reptiles, birds, cats, and small mammals within 12 kg. It features with dual-flow meter (air & oxygen) to meet the demands of different species.



- 0-4L/min dual-flow meter (air and oxygen)
- Non-rebreathing system specially for animals within 12 kg
- Embedded oxygen flush button to prevent accidentally operating
- High accuracy from vaporizer (tested one by one before delivery)
- Compact structure and easy operation
- Red rotary float---more eye-catching and accurate



### Order Information

Cat No.	Description
RSA	Small Pet Anesthesia Machine

### Included

Cat No.	Description	Remarks
RSA-A(H)-S	Small Pet Anesthesia Machine Mounting Assembly (Silver)	
R580-IO	Vaporizer Endcaps (1 pair)	
R583S	Vaporizer for Isoflurane- Easy Fill- Cagemount	Can be changed
R-NBC-C(POV)	Modified Mapleson C System (Pop-Off Occlusion Valve)	
R-CT-18	Corrugated Tube- ID 22.0mm, L1.2m	
R510-31	Gas Filter Canister, Large	Optimal
V100-V	Anesthesia Induction Chamber-Small(15*10*10cm)	
V101-V	Anesthesia Induction Chamber-Medium (24*12*18cm)	
V102-V	Anesthesia Induction Chamber-Large (40*18.5*25cm)	
R-HS	Oxygen Concentrator Shelf (for H-base)	
R640-S1-MS-S	Monitor Shelf (for R640-S1)	
R510-29	Anesthesia Air Pump (HF), 220V	
R510-30	Anesthesia Air Pump (HF), 110V	



## R640 Flexible Veterinary Anesthesia Machine-Wall Mount

R640 is an excellent choice for Non-operating room anesthesia, like Treatment Room, Imaging Room, Anesthesia Preparation Room and Feline Specialist Clinics. It can effectively improve the treatment rate and the medical experience of the owner and animals.



- Wall mount, ideal if you have limited space.
- Non-rebreathing circuit, ensure fast induction, quicker wake up and recovery.
- 10L flow meter, good for animals less than 50kg.
- Oxygen flush with safety restrictor.

### Order Information

Cat No.	Description
R640	Flexible Veterinary Anesthesia Machine-Wall Mount

### Included

Cat No.	Description	Remarks
R640-H	R640 Series Mounting Assembly	
R582S	Vaporizer for Sevoflurane- Easy Fill- Cagemount	Can be changed
R580-IO	Vaporizer Endcaps (1 pair)	
R-NBC-F(JR)	Mapleson F Non-rebreathing Circuit (Jackson-Rees)	
R600-NL-3L	Reusable Non Latex Breathing Bag, 3L	
R600-NL-1L	Reusable Non Latex Breathing Bag, 1L	
R-CT-18	Corrugated Tube- ID 22.0mm, L1.2m	

## R620-MRI MR Conditional Animal Anesthesia Machine

R620-MRI has been tested by Shenzhen Institutes of Advanced Technology. And R620-MRI is proved not to produce displacement and not affect the operation and imaging in MRI systems of 3 Tesla and below 3 Tesla.



- Can be used in MRI systems of 3 Tesla and below 3 Tesla.
- High accuracy vaporizer.
- Good waste gas scavenging system.
- Complete function with both breathing and non-rebreathing circuits.

### Order Information

Cat No.	Description
R620-MRI	MR Conditional Animal Anesthesia Machine

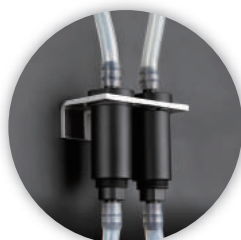
### Included

Cat No.	Description	Remarks
R580S-MRI	Vaporizer for Isoflurane- Pour Fill- Cagemount-MRI	
R580-IO-MRI	Vaporizer Endcaps (1 pair)- MRI	
R510-31	Gas Filter Canister, Large	
R600-ET	Cuffed Endotracheal Tubes (1 set)	
R600-NL-0.5L	Reusable Non Latex Breathing Bag, 0.5L	
R600-NL-1L	Reusable Non Latex Breathing Bag, 1L	
R600-NL-2L	Reusable Non Latex Breathing Bag, 2L	
R-BC-DL	Breathing Circuit Duo-limb, 22mm(M)/15mm(F), 1.5m	
R-NBC-F(JR)	Mapleson F Non-rebreathing Circuit (Jackson-Rees)	
R-AH-MRI	Air Hose, ID8.0-9/16(SGL), 5m , MRI-Compatible	
R-CT-18	Corrugated Tube- ID 22.0mm, L1.2m	



# R630 Dual-drug Veterinary Anesthesia Machine

R630 was developed according to the requirement of veterinary clinics. Suitable for clinical anesthesia of dogs, cats, pigs, monkeys, rodents, reptiles, birds, etc.



Non-return



H-base(optional)

- Dual vaporizers for isoflurane and sevoflurane
- "Non-return"parallel structure to avoid drug mixing
- Easy Fill to avoid leakage and wrong anesthetic filling
- Excellent user experience with APL vale, circuit switch and rail-mounted CO<sub>2</sub> absorber
- Good waste gas scavenging system
- Complete function with both breathing and non-rebreathing circuits

## Order Information

Cat No.	Description
R630	Dual-drug Veterinary Anesthesia Machine

## Included

Cat No.	Description	Remarks
R630-A	R630 Series Mounting Assembly with O <sub>2</sub> Flowmeter (0.1-4LPM)_EN	
R582S	Vaporizer for Sevoflurane- Easy Fill- Cagemount	
R583S	Vaporizer for Isoflurane- Easy Fill- Cagemount	
R580-IO	Vaporizer Endcaps (1 pair)	2 pairs included
R510-31	Gas Filter Canister, Large	
R600-ET	Cuffed Endotracheal Tubes (1 set)	
R600-NL-0.5L	Resuable Non Latex Breathing Bag, 0.5L	
R600-NL-1L	Resuable Non Latex Breathing Bag, 1L	
R600-NL-2L	Resuable Non Latex Breathing Bag, 2L	
R-BC-DL	Breathing Circuit Duo-limb, 22mm(M)/15mm(F), 1.5m	
R-NBC-F(JR)	Mapleson F Non-rebreathing Circuit (Jackson-Rees)	
R-CT-18	Corrugated Tube- ID 22.0mm, L1.2m	

## R610 Veterinary Anesthesia Machine- Tabletop

R610 is applicable to clinical anesthesia of dog, cats, pigs, monkeys, rodent, reptiles, birds etc. With minimal operation design, vet shall feel easy, safe and reliable to perform surgery on animals.



- Tabletop structure and space saving
- High accuracy vaporizer
- High-efficiency gas filter canister
- Support breathing and non-rebreathing circuits
- Oxygen flush for first aid
- Can be extended to mobile anesthesia machine

### Order Information

Cat No.	Description
R610	Veterinary Anesthesia Machine-Tabletop

### Included

Cat No.	Description	Remarks
R610-A	R610 Series Mounting Assembly (Silver) with O <sub>2</sub> Flowmeter (0.1-4LPM)	
R580S	Vaporizer for Isoflurane- Pour Fill- Cagemount	Can be changed
R580-IO	Vaporizer Endcaps (1 pair)	
R510-31	Gas Filter Canister, Large	
R600-ET	Cuffed Endotracheal Tubes (1 set)	
R600-NL-0.5L	Resuable Non Latex Breathing Bag, 0.5L	
R600-NL-1L	Resuable Non Latex Breathing Bag, 1L	
R600-NL-2L	Resuable Non Latex Breathing Bag, 2L	
R-BC-DL	Breathing Circuit Duo-limb, 22mm(M)/15mm(F), 1.5m	
R-NBC-F(JR)	Mapleson F Non-rebreathing Circuit (Jackson-Rees)	
R-CT-18	Corrugated Tube- ID 22.0mm, L1.2m	



## R419 Intelligent Animal Ventilator

R419 is an intelligent ventilator super easy for vets to operate: pre-setted parameters will automatically pop up by only entering weight of the animal. Support VCV, PIPCV and APNEA control to meet multiple clinical applications.



RV-PEEP

Adjustable pressure range: 3~20cmH<sub>2</sub>O

Material: polycarbonate, polypropylene, silica rubber, stainless steel



- Automatic pre-setted parameters by entering animal weight
- 20 sets of parameters can be stored and retrieved by vets
- APNEA mode available, do not interfere patient spontaneous breathing
- Identify and alarm suffocation, monitor the respiratory during whole process
- Touch screen and 75° visual surface design for easy operation

### Order Information

Cat No.	Description
R419	R419 Intelligent Animal Ventilator

### Included

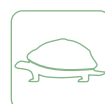
Cat No.	Description	Remarks
R419	R419 Intelligent Animal Ventilator	
R409-TC	T-connector-9/16	
R409-AH-80	O <sub>2</sub> hose-ID8.0-M16*1.5-9/16 connector, 1m	
RV-PEEP	Mechanical Ventilation PEEP Valve	Optional

## RSV Small Pet Ventilator

**Introduction:** The RWD Small Pet Ventilator is applicable to mechanical ventilation of reptiles, birds, cats, and small mammals within 12 kg. It requires only setting airway pressure and respiratory rate to provide safe mechanical ventilation for animals.



- Provide safe and efficient Intermittent Positive Pressure Ventilation (IPPV)
- Set value of respiratory rate directly.
- Support one-button switching between spontaneous breathing and IPPV
- Indicate airway pressure by real-time graphics
- Display respiratory rate, I:E ratio, inhalation time and exhalation time by real time.
- Adopt separated structure between controller and operation, which makes usage more flexible and diverse.
- Verify I:E ratio by changing gas flow
- Built in alarm parameters to monitor breathing status by real time



### Order Information

Cat No.	Description
RSV-W	RSV Small Animal Ventilator

### Included

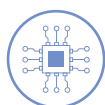
Cat No.	Description	Remarks
RSV	RSV Small Animal Ventilator	
RSV-ET	Exhaust Tube	
RSV-EK	Extension Kit	
RSV-GS	Gas Supply Hose	
RSV-LDS	Low Dead Space Kit	



# Veterinary Multi-parameter Monitor

RM300 / RM400S / RM400M

To monitor various parameters including SpO<sub>2</sub>, ECG, NIBP, TEMP, RESP, ETCO<sub>2</sub>, HR.



## Embedded Motherboard

Long life & low maintenance cost



## Digital Pulse Oximetry

Accurate monitoring during low perfusion



## Masimo Mainstream EtCO<sub>2</sub> (Optional)

Reaction time <1S



## Graphic Button and Backlight Design



## Multiple Display Methods

Meet individual needs



## Built-in Recorder (Optional)

Ready to print

## Order Information

Cat No.	Description	Remarks
RM300	Veterinary Monitor with SpO <sub>2</sub> , ECG, RESP, NIBP, TEMP and HR	
RM400M	Veterinary Monitor with EtCO <sub>2</sub> , SpO <sub>2</sub> , ECG, RESP, HR, NIBP and TEMP (Mainstream)	EtCO <sub>2</sub> (Mainstream)
RM400S	Veterinary Monitor with EtCO <sub>2</sub> , SpO <sub>2</sub> , ECG, RESP, HR, NIBP and TEMP (Sidestream)	EtCO <sub>2</sub> (Sidestream)

## RM-C1 Veterinary Capnograph

To monitor ETCO<sub>2</sub> and respiratory rate to help veterinarians identify animal ventilation in time.



Real-time measurement of end-tidal carbon dioxide in animals



Fast response, real-time EtCO<sub>2</sub> waveform displayed in 5 seconds



Audible and visual alarm system



Clear display of waveform and value to provide doctors with comprehensive interpretation

### Order Information

Cat No.	Description
RM-C1	Veterinary Capnograph



## ROC-5A Veterinary Oxygen Concentrator

ROC-5A oxygen concentrator is designed specifically for veterinary use. The high purity oxygen is separated from air by molecular sieve pressure swing adsorption(PSA)technology.



- Flow rate: 5L/min
- Generate medical oxygen (USP93%) from air, very cost effective
- With air filter, build-in filter and humidifier bottle, 99.999% of bacteria, viruses and odor can be removed effectively
- Low O<sub>2</sub> concentration alarm and abnormal alarm
- Quiet design to offer you a silent and comfortable working environment
- Suitable for supplying oxygen for anesthesia recovery, ICU, first aid etc

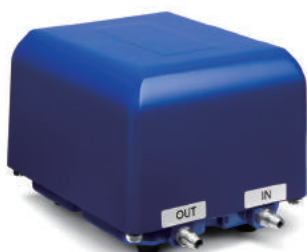
### Order Information

Cat No.	Description
ROC-5A	Veterinary Oxygen Concentrator

### Included

Cat No.	Description	Remarks
JAY-5BW	Oxygen Generator (Main Body)	
R510-25-86	9/16 TO Φ8 Cone Connector (1 piece)	
R-ST-60A	Silicone Tubing- ID:6.0,OD:10.0mm	
A5	User Manual	
V-1	Air Filter	

## Anesthesia Air Pump



### Order Information

Cat No.	Description
R510-29	Anesthesia Air Pump (HF), 220V
R510-30	Anesthesia Air Pump (HF), 110V

# Veterinary Dental Units

## D-Pro Veterinary Dental Unit

D-pro veterinary dental unit provides a variety of functions for veterinarians, such as grinding, polishing, cutting and cleaning, and makes daily animal oral health work easy and efficient.



Veterinary Ultrasonic Scaler (optional)

- Water and electricity separation design to ensure the safety of the equipment.
- 360 ° handpiece, light in weight, reduces hand fatigue effectively.
- High-speed LED handpiece provides bright operative vision.
- High quality oil-free air compressor to avoid the trouble of daily maintenance.
- 20L large capacity air tank ensures pressure balance and long-term supply, and reduces the frequency of air charging.
- Automatically drain pollution or water from the air tank, greatly reduces the trouble of daily maintenance for veterinary, reduces the risk of rust, and prolong the lifespan.
- Magnetic holder to prevent fine dental tools accidental loss.
- The whole machine weighs only 46kg, flexible movement with super smooth casters.

### Order Information

Cat No.	Description
D-pro	Veterinary Dental Unit
D-ProE	Veterinary Dental Unit-Lite (Host and 3 Way Air/Water Syringe Only)

### Included

Description	Amount	Function	Remarks
Host	1pcs		Included
High Speed Handpiece	1pcs	Mainly for Cutting	
Low Speed Handpiece	1pcs	Polishing	
3 Way Air/Water Syringe	1pcs	Oral Disinfection and Washing	
Suction Handpiece	1pcs	Take away the liquid in the mouth	
Disposable Suction Tip	1Set (25pcs)	Used with Suction Device	
Burs	1Set (Tapered fissure burs*5+Spherical burs*5)	Used with High Speed Handpiece	
Disposable Polishing Head	1Set (10pcs)	Used with Low Speed Handpiece	

## D-U2000 Flexible Veterinary Dental Unit

D-U2000 Flexible veterinary dental unit was designed to help veterinarians perform their daily work easier and more efficient. Veterinarians can complete grinding, polishing, cutting and cleaning very quickly without fatigue.



- Powerful 360° swivel high-speed handpiece with self-generating LED illumination helps veterinarians cut animal teeth easily.
- Low speed motor with coolant delivery tube for effective cooling. It can also compatible with polishing head and burs.
- Automatically drain pollution or water from the air tank, greatly reduces the trouble of daily maintenance for veterinary, reduces the risk of rust, and prolong the lifespan.
- 28000Hz scaler with automatic frequency tracking to ensure power, and white LED light for clear vision without fatigue.
- Magnetic platform to absorb burs or other fine tools, avoid accidental sliding or loss.
- Whole machine weighs only 32kg. Super smooth casters will ensure flexible movement.

### Order Information

Cat No.	Description
D-U2000	Flexible Veterinary Dental Unit
D-U2000L	Flexible Veterinary Dental Unit-Lite

### Included

Description	D-U2000 (Standard Edition)	D-U2000L (Lite)
High Speed Handpiece	1pcs	—
Low Speed Handpiece	1pcs	—
3 Way Air/Water Syringe	1pcs	1pcs
Scaler Handpiece	1pcs	1pcs
Burs	1 Set (Tapered fissure burs*5+Spherical burs*5)	—
Disposable Polishing Head	1 Package (5pcs)	—
Scaling Tips	1 Set (5pcs)	1 Set (5pcs)

Note: The D-U2000L (Lite) reserves the interface for high and low speed handpiece

# Dental X-ray

## Veterinary Dental X-ray

Used for the diagnosis of pet teeth. Veterinarians make the treatment plan according to the X-ray image.



- Using the international advanced technology, efficient integrated design
- Microcomputer intelligent control, not only remote controlled exposure, but more powerful function of low voltage alarm and high voltage protection
- Micro focus technology, much more clear image
- The dual focus configuration makes the image clearer and the diagnosis more accurate
- Can use lightroom dental film, imaging in one minute
- Intraoral digital imaging system is optional

### Order Information

Model	Description
D-X8V	Mobile Veterinary Dental X-ray

### Included

Description	Amount	Remarks
Mobile Veterinary Dental X-ray Host	1	
Exposure Switch	1	
Remote Control	1	
Dental digital imaging system	1	Optional



- Small size, light weight, portable
- With memory storage function, only one exposure can permanently memorize the exposure parameters
- 0.4mm \* 0.4mm dual focus configuration, which makes the image clearer and the diagnosis more accurate
- High-frequency power supply • Low radiation • Good-looking appearance
- Can use lightroom dental film, imaging in one minute

### Order Information

Model	Description
D-X2V	Portable Veterinary Dental X-ray

### Included

Description	Amount	Remarks
Portable Veterinary Dental X-ray Host	1	Optional
Mobile Scaffold	1	
Dental Digital Imaging System	1	

# Ultrasonic Scaler

## D-VS Veterinary Ultrasonic Scaler

The D-VS veterinary ultrasonic scaler is mainly used to remove calculus, plaque and other tooth stains on the surface of teeth and periodontal tissues, so as to prevent further damage to oral health.



- Aluminum alloy handle supports high temperature sterilization;
- The treatment head is equipped with LED light to make the cleaning vision bright;
- Automatic frequency tracking, not affected by the size and obstinacy of calculus
- Equipped with common working tips to meet various dental cleaning needs

### Order Information

Model	Description
D-VS	Veterinary Ultrasonic Scaler

### Included

Description	Amount	Remarks
Main unit	1	Included
Adapter	1	
Foot switch	1	
Handpiece	1	
Wrench	1	
Scaling tip	6	
Water pipe	1	
Measurement card	1	

# 🐾 Laser Therapy 🐾

## RLT-24 Veterinary Laser Therapy

The main clinical benefits of RLT-24 Veterinary Laser Therapy use in pets include decreased inflammation, decreased pain, and improved wound healing.



- Intelligence solution: more than 1,300 recommended treatment built in, featured by easy operation and easy control by veterinarians.
- Multiple modes: support three laser emission modes: CW mode, Pulse mode and ISP mode. The combination of multiple modes can improve the treatment efficiency, reduce thermal burns, and intensify laser treatment.
- High power: the laser power is up to 24W, with remarkable treatment effect, stable light, safe and fast.
- Four wavelengths: arbitrary combination of four wavelength lasers of 650nm, 810nm, 915nm and 980nm, superior lasers of different wavelengths available for different cases, and wider clinical application scope.
- User-friendly design: LCD touch screen; the rear-mounted large optical fibre winding disk, which is convenient for storage and protects the optical fibre and prolongs its service life.
- Features: built-in video tutorial board, "hands-on" teaching, and no difficulty in operation; automatic storage of treatment records for easy information traceability.

### Order Information

Cat No.	Description
RLT-24	Veterinary Laser Therapy

### Included

Description	Amount	Function	Remarks
Veterinary Laser Therapy	1	Laser therapy	Included
Optical fibre handpiece	1	Laser transmission and control	
Lens	5	Change the beam size to realize optimal treatment and diversity	
Protective goggles	6	3 for staff and 3 for animals for eyes protection	
Interlock	1	The interlock should be connected to the device to prevent any personnel entering the room and being exposed to the laser irradiation	
Power adaptor	1	Device power input	
Toolkit	1	Store lens and optical fibre handpiece	





## R-CU510 Smart Animal ICU

R-CU510 The Smart Animal ICU, provides animal patients with the most comfortable medical care environment to help animals recover faster.



- Built-in preset parameters.
- Touchscreen LCD display for best simplicity.
- Air filter • UVC lamp • Anion function for effective sanitation management.
- Support infusion / oxygen / atomization treatment, to meet various care conditions
- Stable control of temperature, humidity, O<sub>2</sub> concentration, and real-time CO<sub>2</sub> concentration monitoring through electronic controller.
- Automatic ventilation based on CO<sub>2</sub> concentration parameters and temperature ;Built-in failure alarm covering abnormal high temperature, low humidity and CO<sub>2</sub> levels.

### Order Information

Cat No.	Description
R-CU510	Smart Animal ICU

## Accessories

### ► Vaporizer

RWD vaporizer adopts the most advanced design to accurately control the output concentration of anesthetic. Pour Fill, Easy Fill and Key Fill, Cagemount and Selectatec, Isoflurane and Sevoflurane available!



Pour-Fill



Easy-Fill



Key-Fill

- Zero leakage, internal pressure up to 50kpa, safe and reliable
- >120ml capacity
- Isoflurane concentration range 0-5% (sevoflurane: 0-8%)

- Completely calibrating and testing one by one
- Built-in temperature compensator
- Working temperature range from 10 °C to 35 °C



R580-IO

Cagemount

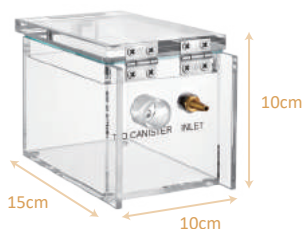
R580-SA

Selectatec

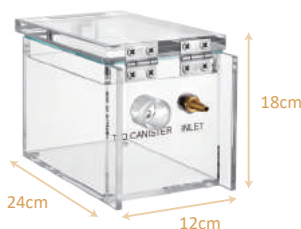
### Order Information

Cat No.	Description
R580s	Vaporizer for Isoflurane- Pour Fill- Cagemount
R581S	Vaporizer for Sevoflurane- Pour Fill- Cagemount
R582S	Vaporizer for Sevoflurane- Easy Fill- Cagemount
R583S	Vaporizer for Isoflurane- Easy Fill- Cagemount
R580-IO	Vaporizer Endcaps (1 pair)
R580SS	Vaporizer for Isoflurane- Pour Fill- Selectatec
R581SS	Vaporizer for Sevoflurane- Pour Fill- Selectatec
R582SS	Vaporizer for Sevoflurane- Easy Fill- Selectatec
R583SS	Vaporizer for Isoflurane- Easy Fill- Selectatec
R580-SA	Vaporizer-suspension assembly-R640
R584S	Vaporizer for Isoflurane- Key Fill-Cagemount
R585S	Vaporizer for Sevoflurane- Key Fill- Cagemount
R584SS	Vaporizer for Isoflurane- Key Fill- Selectatec
R585SS	Vaporizer for Sevoflurane- Key Fill- Selectatec

### ► Anesthesia Induction Chambers



V100-V



V101-V



V102-V

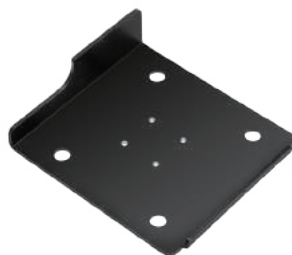
### Order Information

Cat No.	Description
V100-V	Anesthesia Induction Chamber-S
V101-V	Anesthesia Induction Chamber-M
V102-V	Anesthesia Induction Chamber-L

## ► Shelf



R-HS



R409-MB



R640-S1-MS-S



R640-S1-MS-R



RAH-W

### Order Information

Cat No.	Description	Remarks
R-HS	Oxygen Concentrator Shelf (for H-base)	340*484mm
R409-MB	Mounting Bracket for R409/R419 Ventilator	235*220mm
R640-S1-MS-S	Monitor Shelf (for R640-S1)	325*225mm
R640-S1-MS-R	Monitor Shelf (for R640-S1)	325*225mm
RAH-W	Holder of veterinary anesthesia machine (Wall mount)	265*150*120mm

## ► Laryngoscopes

Apply to medium or large animals'laryngeal examination and tracheal intubation.



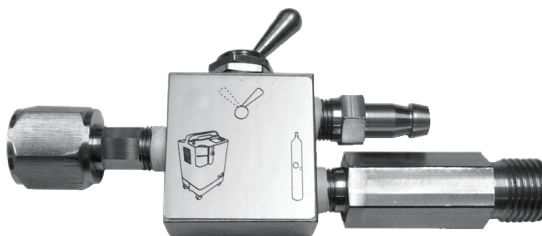
### Order Information

Cat No.	Description
C45001-00	Miller Lamp Laryngoscope, 5 Blades+Handle+Case
C45002-00	Miller F.O. Laryngoscope, 5 Blades+Handle+Case

## ► Toggle Switch



R-TS



R-GTS

### Order Information

Cat No.	Description
R-TS	Toggle Switch for Breathing Bag and Ventilator
R-GTS	Toggle Switch for Oxygen Cylinder and Oxygen Concentrator

## ► Regulator



### Order Information

Cat No.	Description
R-PG-O <sub>2</sub> -1M(CN)Pro	O <sub>2</sub> Pressure Regulator-Single, 4Mpa, 0.4-0.45MPa-Pro

## ► Air Hose



R-AH-80



R409-AH-1



R409-AH-2

### Order Information

Cat No.	Description	Remarks	
R-AH-80	Air Hose (3-layer Compounded Rubber)- ID8.0-9/16(SGL)-2m	M16*1.5(M) and 9/16-18UNF(M)	Green is optional
R409-AH-1	O <sub>2</sub> Hose, Blue, 2*9/16 Connector, 1m	9/16-18UNF(M)*2	
R409-AH-2	O <sub>2</sub> Hose, Blue, 2*9/16 Connector, 2m	9/16-18UNF(M)*2	

# Disposable

## ► Mask

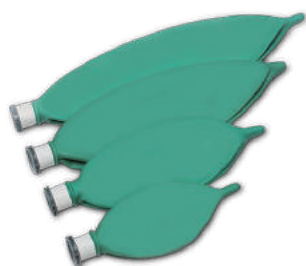
Apply to anesthesia induction, breathing rescue of felines, canines and other similar size animals.

### Order Information

Cat No.	Description
68637	Small Feline Mask, 44mm(OD)*22mm(ID)*24mm(Depth)
68638	Medium Feline Mask, 57mm(OD)*30mm(ID)*29mm(Depth)
68639	Large Feline Mask, 60mm(OD)*33mm(ID)*35mm(Depth)
68640	Small Canine Mask, 87mm(OD)*30mm(ID)*73mm(Depth)
68641	Medium Canine Mask, 110mm(OD)*42mm(ID)*97mm(Depth)
68642	Large Canine Mask, 130mm(OD)*54mm(ID)*121mm(Depth)
68643	Feline/Canine Mask Set of 6 pcs



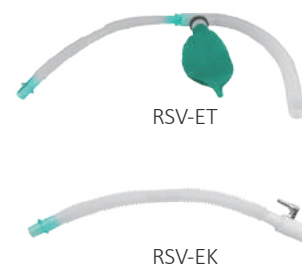
## ► Breathing Bags



### Order Information

Cat No.	Description
R600-NL-0.5L	Reusable Non Latex Breathing Bag, 0.5L
R600-NL-1L	Reusable Non Latex Breathing Bag, 1L
R600-NL-2L	Reusable Non Latex Breathing Bag, 2L
R600-NL-3L	Reusable Non Latex Breathing Bag, 3L

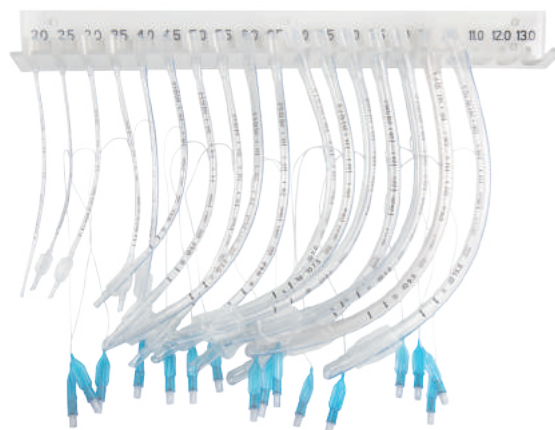
## ► Breathing Circuits



### Order Information

Cat No.	Description
R-BC-DL	Breathing Circuit Duo-limb, 22mm(M)/15mm(F), 1.5m
R-NBC-F(JR)	Mapleson F Non-rebreathing Circuit (Jackson-Rees)
RSV-ET	Exhaust Tube
RSV-EK	Extension Kit
RSV-LDS	Low Dead Space Kit
RSV-GS	Gas Supply Hose

## ► Endotracheal Tubes



### Order Information

Cat No.	Description	Remarks
R600-ET	Cuffed Endotracheal Tubes, 17 sizes/Set	
R600-ET-20	Endotracheal Tubes-I.D.2.0mm*O.D.3.3mm	10pcs/box
R600-ET-25	Cuffed Endotracheal Tubes-I.D.2.5mm*O.D.3.7mm	10pcs/box
R600-ET-30	Cuffed Endotracheal Tubes-I.D.3.0mm*O.D.4.0mm	10pcs/box
R600-ET-35	Cuffed Endotracheal Tubes-I.D.3.5mm*O.D.4.7mm	10pcs/box
R600-ET-40	Cuffed Endotracheal Tubes-I.D.4.0mm*O.D.5.3mm	10pcs/box
R600-ET-45	Cuffed Endotracheal Tubes-I.D.4.5mm*O.D.6.0mm	10pcs/box
R600-ET-50	Cuffed Endotracheal Tubes-I.D.5.0mm*O.D.6.7mm	10pcs/box
R600-ET-55	Cuffed Endotracheal Tubes-I.D.5.5mm*O.D.7.3mm	10pcs/box
R600-ET-60	Cuffed Endotracheal Tubes-I.D.6.0mm*O.D.8.0mm	10pcs/box
R600-ET-65	Cuffed Endotracheal Tubes-I.D.6.5mm*O.D.8.7mm	10pcs/box
R600-ET-70	Cuffed Endotracheal Tubes-I.D.7.0mm*O.D.9.3mm	10pcs/box
R600-ET-75	Cuffed Endotracheal Tubes-I.D.7.5mm*O.D.10.0mm	10pcs/box
R600-ET-80	Cuffed Endotracheal Tubes-I.D.8.0mm*O.D.10.7mm	10pcs/box
R600-ET-85	Cuffed Endotracheal Tubes-I.D.8.5mm*O.D.11.3mm	10pcs/box
R600-ET-90	Cuffed Endotracheal Tubes-I.D.9.0mm*O.D.12.0mm	10pcs/box
R600-ET-95	Cuffed Endotracheal Tubes-I.D.9.5mm*O.D.12.7mm	10pcs/box
R600-ET-100	Cuffed Endotracheal Tubes-I.D.10.0mm*O.D.13.3mm	10pcs/box
R-ET-WHF	Wall Hanging Frame for Endotracheal Tubes (ID 2.0-13.0mm)	

## ► Gas Filter Canister

Used to absorb isoflurane and sevoflurane. Net weight is 800g, and it can absorb 200g waste gas.



### Order Information

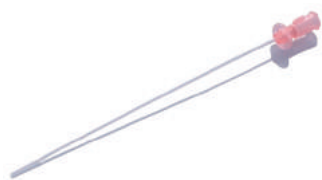
Cat No.	Description
R510-31-6	Gas Filter Canister, Large, Package of 6pcs
R510-31S-6	Gas Filter Canister, Small, pkg of 6pcs



## ► Urinary Catheter

### /Cat Urinary Catheter/

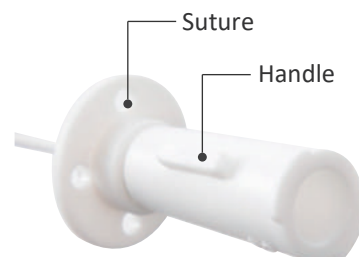
Made of medical grade PVC material. Good biocompatibility, suitable for medium and long term indwelling (1-3 days).



Cat catheter without Stylet



Cat catheter with Stylet



Luer Lock

#### Order Information

Product Name	Cat No.	Parameter(mm)	Remarks
Cat Catheter Luer-1.0 (25pcs/box)	R600-CCD-10	1.0x130	
Cat Catheter Luer-1.3 (25pcs/box)	R600-CCS-13	1.3x130	
Cat Catheter-Open end-3Fr (10pcs/box)	R600-CCD1-10	1.0x130	
Cat Catheter-Side hole-3Fr (10pcs/box)	R600-CCS1-10	1.0x130	

### /Silicone Foley Catheter/

Made of 100% silicone material. High biocompatibility, suitable for long time indwelling (7 days). The catheter is visible under X-Ray.



#### Order Information

Product Name	Cat No.	Parameter(mm)	Description
Silicone Foley Catheter-2.0 (10pcs/box)	R600-FDC-20	6Fr (2.0x300)/ballon 3ml	
Silicone Foley Catheter-2.7 (10pcs/box)	R600-FDC-27	8Fr (2.7x300)/ballon 3-5ml	
Silicone Foley Catheter-3.3 (10pcs/box)	R600-FDC-33	10Fr (3.3x300)/ballon 3-5ml	

### /Dog Urinary Catheter/

Made of medical grade PVC material, good hardness, easy to intubate. The round tip and atraumatic side holes can protect the mucosal tissue during insertion.



#### Order Information

Product Name	Cat No.	Parameter(mm)	Description
Disposable Dog Catheter-1.6 (10pcs/box)	R600-MDC-16	1.6x500	
Disposable Dog Catheter-2.0 (10pcs/box)	R600-MDC-20	2.0x500	
Disposable Dog Catheter-2.6 (10pcs/box)	R600-MDC-26	2.6x500	

# Animal Surgical Instruments

## SP0051-C Castration Surgery Instrument Kit for Pet

Description	
Scalpel Handles with Ruler 3# Solid-12.5cm	1
15# Scalpel Blades (Box of 100pcs)	1
1x2 Teeth Tissue Forceps (Standard)-Str, Tip width 1.8mm, 14cm	1
Dressing Forceps-Str, Tip width 1.4mm, teeth length 19mm, 15.5cm	1
MAYO-STILLE Dissecting & Operating Scissors-B/B Str/37*9mm/14cm	1
MAYO-STILLE Dissecting & Operating Scissors-B/B Cvd/41*9.5mm/14cm	1
Operating Scissors w/Slender Blades-S/B Str/48.6*9.5mm/14.5cm	1
HALSTED Mosquito Forceps-Str, 21*1.2mm/12.5cm	1
HALSTED Mosquito Forceps-Cvd, 23.5*1mm/12.5cm	1
CRILE-RANKIN Artery Forceps-Str, 37*1mm/16cm	1
CRILE-RANKIN Artery Forceps-Cvd, 35*1.5mm/16cm	1
BACKHAUS Towel Forceps-11cm	4
Instrument Storage Portfolio, 32*22cm	1
Operating Scissors (Round Type)-S/S Str/48*10mm/15.5cm	1
MAYO-HEGAR Needle Holders-Str/21*2.8mm/16cm	1
ALLIS 4x5 Teeth Forceps-Str, 39*5mm Tips/15cm	1



## SP0050-S Sterilization Surgery Instrument Kit for Pets

Description	
Scalpel Handles with Ruler 3# Solid-12.5cm	1
15# Scalpel Blades (Box of 100pcs)	1
1x2 Teeth Tissue Forceps (Standard)-Str, Tip width 1.8mm, 14cm	1
Dressing Forceps-Str, Tip width 1.4mm, teeth length 19mm, 15.5cm	1
MAYO-STILLE Dissecting & Operating Scissors-B/B Str/37*9mm/14cm	2
MAYO-STILLE Dissecting & Operating Scissors-B/B Cvd/41*9.5mm/14cm	1
Operating Scissors (Round Type)-S/S Str/48*10mm/15.5cm	1
Operating Scissors w/Slender Blades-S/B Str/48.6*9.5mm/14.5cm	1
HALSTED Mosquito Forceps-Str, 21*1.2mm/12.5cm	2
HALSTED Mosquito Forceps-Cvd, 23.5*1mm/12.5cm	2
CRILE-RANKIN Artery Forceps-Str, 37*1mm/16cm	2
CRILE-RANKIN Artery Forceps-Cvd, 35*1.5mm/16cm	2
BACKHAUS Towel Forceps-11cm	4
Ovarian Hooks, 1 Ball Tooth, 45°Cvd, 10mm depth, 16cm	1
ALLIS 4x5 Teeth Forceps-Str, 39*5mm Tips/15cm	1
MAYO-HEGAR Needle Holders-Str/21*2.8mm/16cm	1
Instrument Storage Portfolio, 32*22cm	1



## DS1005-06 Winged Elevator Set for Dog (Standard Handle), 6pcs

Description	
Winged Elevators with Standard Handle, 1mm	1
Winged Elevators with Standard Handle, 2mm	1
Winged Elevators with Standard Handle, 3mm	1
Winged Elevators with Standard Handle, 4mm	1
Winged Elevators with Standard Handle, 5mm	1
Winged Elevators with Standard Handle, 6mm	1
Instrument Storage Portfolio, 32*22cm	1



## DS1001-15 Instrument Set for Dog w/Standard Handle Elevators, 15pcs

Description	
Winged Elevators with Standard Handle, 1mm	1
Winged Elevators with Standard Handle, 2mm	1
Winged Elevators with Standard Handle, 3mm	1
Winged Elevators with Standard Handle, 4mm	1
Winged Elevators with Standard Handle, 5mm	1
Elevators with Standard Handle, Straight Root Tip Pick	1
Extraction Forceps for Dog, Curved, 12.5cm	1
Tartar Removing Forceps with Curved Beak, 11.5cm	1
Double Ended Fine Periosteal Elevator	1
Subgingival Curette for Dog	1
Jaquette Supragingival Scaler for Dog	1
Sickle Scaler for Dog	1
Probe/Shepherd-hook Explorer with 1-10mm Marker	1
Minnesota Retractor, 14cm	1
Instrument Storage Portfolio, 32*22cm	1
Mouth Gag - 8cm Opening	1



## DS1010-10 Instrument Set for Cat w/Standard Handle Elevators, 10pcs

Description	
Straight Tip Elevators with Standard Handle, 1mm	1
Straight Tip Elevators with Standard Handle, 2mm	1
Probe/Shepherd-hook Explorer with 1-10mm Marker	1
Double Ended Fine Periosteal Elevator	1
Resorptive Lesion Probe for Cat	1
Sickle Scaler for Cat	1
Curette for Small Dog or Cat	1
Mini Extraction Forceps for Cat, Straight, 12.5cm	1
Small Dog or Cat Right Angle Extraction Forceps, 12.5cm	1
Mouth Gag - 5cm Opening	1
Instrument Storage Portfolio, 32*22cm	1



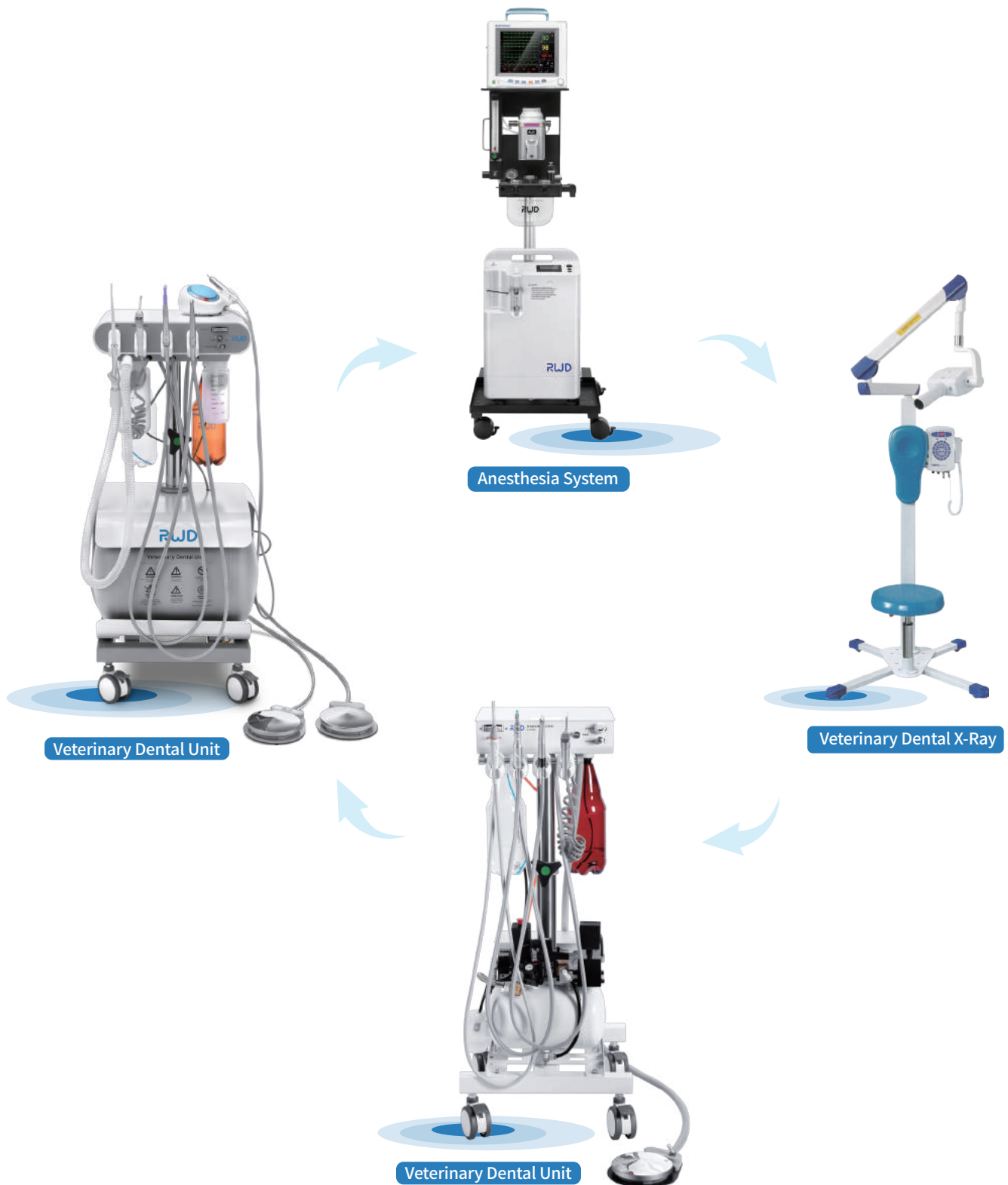
## DS1006-06 Winged Elevator Set for Dog (Stubby Handle), 6pcs

Description	
Winged Elevators with Stubby Handle, 1mm*	1
Winged Elevators with Stubby Handle, 2mm*	1
Winged Elevators with Stubby Handle, 3mm*	1
Winged Elevators with Stubby Handle, 4mm*	1
Winged Elevators with Stubby Handle, 5mm*	1
Winged Elevators with Stubby Handle, 6mm*	1
Instrument Storage Portfolio, 32*22cm	1
UK-SC002 Instrument sterilization box (Optional)	1



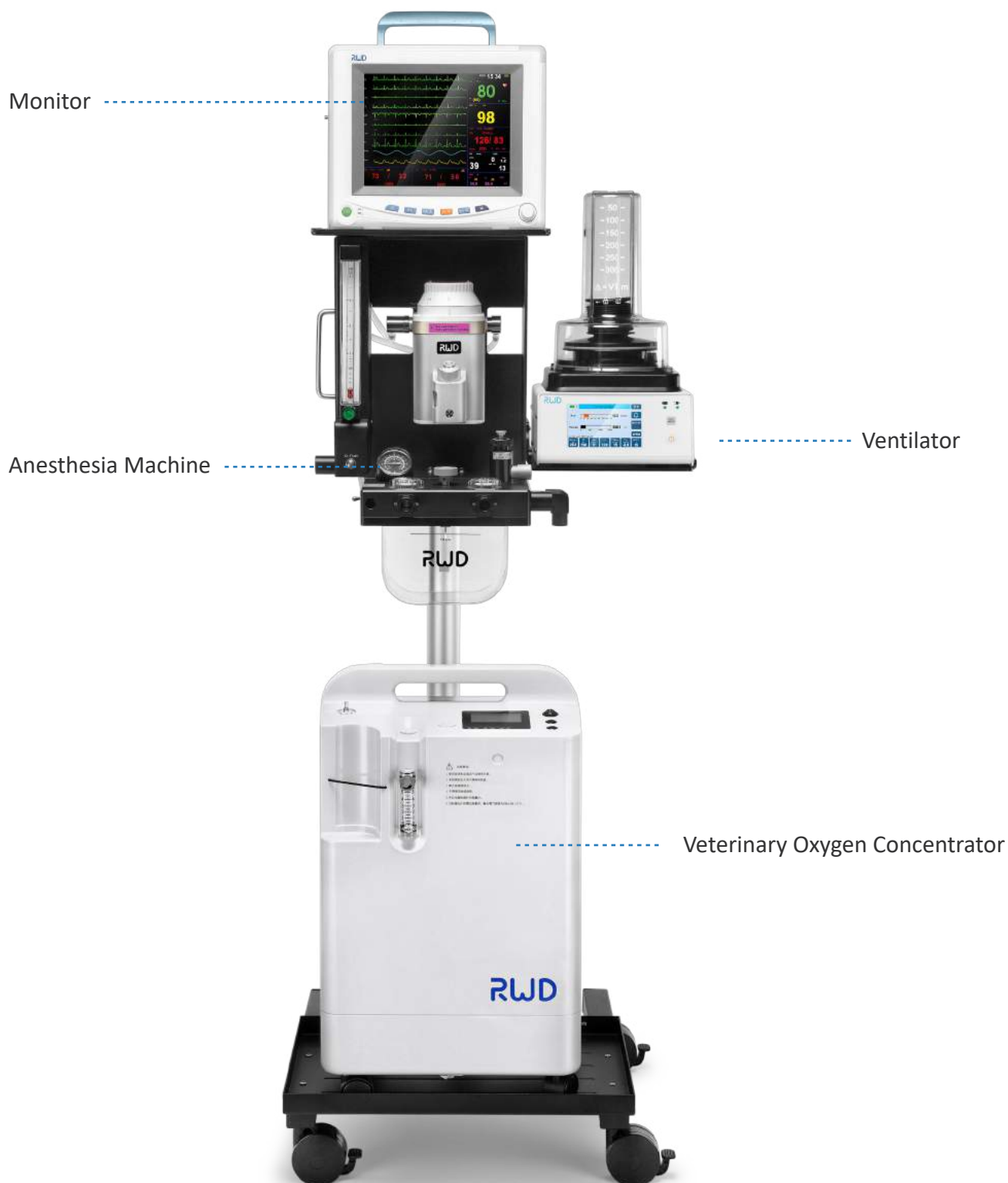
# Veterinary Dental One-stop Solution

- Applicable to animal dental clinics
- One-stop solution for anesthesia system, dental unit and dental X-ray
- Basket purchase in one step



# Veterinary Anesthesia One-stop Solution

- Applicable to pet hospitals/clinics
- One-stop solution for anesthesia, monitoring, mechanical ventilation and waste gas scavenging
- Compact design and space saving
- Basket purchase, low maintenance cost



## RWD Life Science Co.,Ltd

**Add:** 19-20/F, Building 7A, Shenzhen International Innovation Valley, Dashi 1<sup>st</sup> Road, Nanshan District, Shenzhen, Guangdong, P.R. China      **E-mail:** [rwd@rwdstco.com](mailto:rwd@rwdstco.com)

## RWD Life Science Inc.

**Tel:** (858)900-5879      **Support:** [service@rwdls.com](mailto:service@rwdls.com)      **Web:** [www.rwdstco.com](http://www.rwdstco.com)

**Copyright ©RWD Life Science Co., LTD. 2020. All rights reserved.**

No part of this document maybe reproduced or transmitted in any form or by any means without prior written consent of RWD Life Science Co., LTD.

### Trademark Notice

**RWD**, **RWD**瑞沃德, and **RWD**瑞沃德 are trademarks or registered trademarks of RWD Life Science Co., LTD.

Other trademarks, product, service and company names mentioned are the property of their respective owners.

### General Disclaimer

The information in this document may contain predictive statements including, without limitation, statements regarding the future financial and operating results, future product portfolio, new technology, etc. There are a number of factors that could cause actual results and developments to differ materially from those expressed or implied in the predictive statements. Therefore, such information is provided for reference purpose only and constitutes neither an offer nor an acceptance.

RWD may change the information at any time without notice.

[www.rwdstco.com](http://www.rwdstco.com)