



RWD

RWD 2021

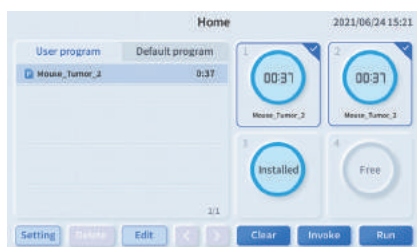
PRODUCT CATALOG

For Pathological Diagnosis
and Cell & Molecular Biology Research

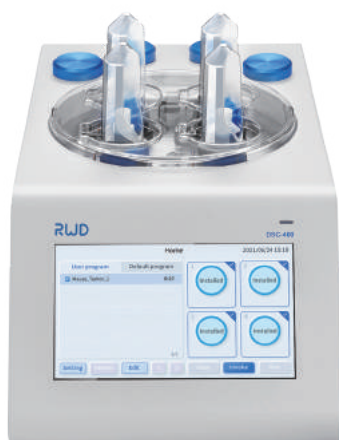
Cellular and Molecular Biology Research Solution

Single Cell Suspension Dissociator

RWD Single cell suspension dissociator uses tissue processing tubes, tissue dissociation kits, and built-in optimization programs for preparing high-activity single-cell suspension and tissue homogenate. The preparation of single-cell suspension with high cell viability can be completed within 15-30 minutes, which makes the experiments more reproducible. 4 independent operating channels and heating jackets can automate the processes and improve the efficiency of tissue processing. It is widely used in single-cell sequencing, primary cell culture, fluorescence-activated cell sorting, cell therapy, and other research fields.



Tube position detecting



Single Cell Suspension Dissociator



Visualized and editable programs

Features

Intelligent

- Pre-defined standard processes and customized processes supported.
- Processes can be imported and synchronized via USB ports.

Gentle

- Stable motor speed ranges from 20 to 4000 rpm.
- Customized tissue dissociation kits and tissue processing tubes can ensure cell viability and reduce experimental losses.

Safe

- Multiple alarms guarantee the safety of both operators and samples.
- Fully sealed tube prevents contamination of cells.

Efficient

- 4 independent channels work simultaneously for different tissue processing.
- Heating jackets are available for fully automated sample preparation.
- Capable of single-cell suspension and tissue homogenate.

Technical Parameters:

Model	DSC-400
Sample volume	20-4000mg
Buffer volume	0.3-10mL
Speed	20-4000 rpm
Temperature	37°C
Channels	4
Operation method	Touch screen
Dimensions (W*D*H)	215*380*190 mm
Weight	~9.0 kg

Order Information:

Cat No.	Product Description
DSC-400	Single cell suspension dissociator
SCT-25	Tissue processing tube(25pcs/box)
SCT-100	Tissue processing tube(100pcs/box)
DHTE-5001	High Activity Tumor Tissue Enzymatic Digestion Kit (Mouse)

► Consumables:



Tissue Processing Tube

- Ethylene oxide(EO) sterilized
- Independent packaging make it convenient for storage and use

Order Information:

Model	SCT-25	SCT-100
Sample volume	20-4000mg	
Buffer volume	0.3-10mL	
Dimensions	35*89mm	
Package	25pcs/box	100pcs/box



Enzymatic Digestion Kit

- Targeted optimization of enzymatic hydrolysis formula can ensure high cell viability
- Preserving cell surface epitopes leads to no effect for downstream experiments

Order Information:

Product Description	Model	Number of reactions
High Activity Tumor Tissue Enzymatic Digestion Kit (Mouse)	DHTE-5001	50T
High Activity Neonatal Brain Enzymatic Digestion Kit (Mouse and Rat)	DHNBE-5002	50T
High Activity Adult Brain Enzymatic Digestion Kit (Mouse and Rat)	DHABE-5003	50T
High Activity Spleen Tissue Enzymatic Digestion Kit (Mouse)	DHSE-5004	50T
Other Tissue Enzymatic Digestion Kit *		

Cell Separation Kit



HCSC-25 High-capacity separation column



Mouse CD3⁺ Cell Separation Kit

► Features

- High cell viability, high purity, low stimulation, and low residue.
- Cell culture, flow cytometry, and single-cell sequencing can be carried out after separation.

Order Information:

Cat No.	Product Description
HCSC-25	High-capacity separation column(25pcs/box)
SSA	Separation stand
HCS-01	High-capacity Separator
K1301-10	Mouse CD3 ⁺ Cell Separation Kit

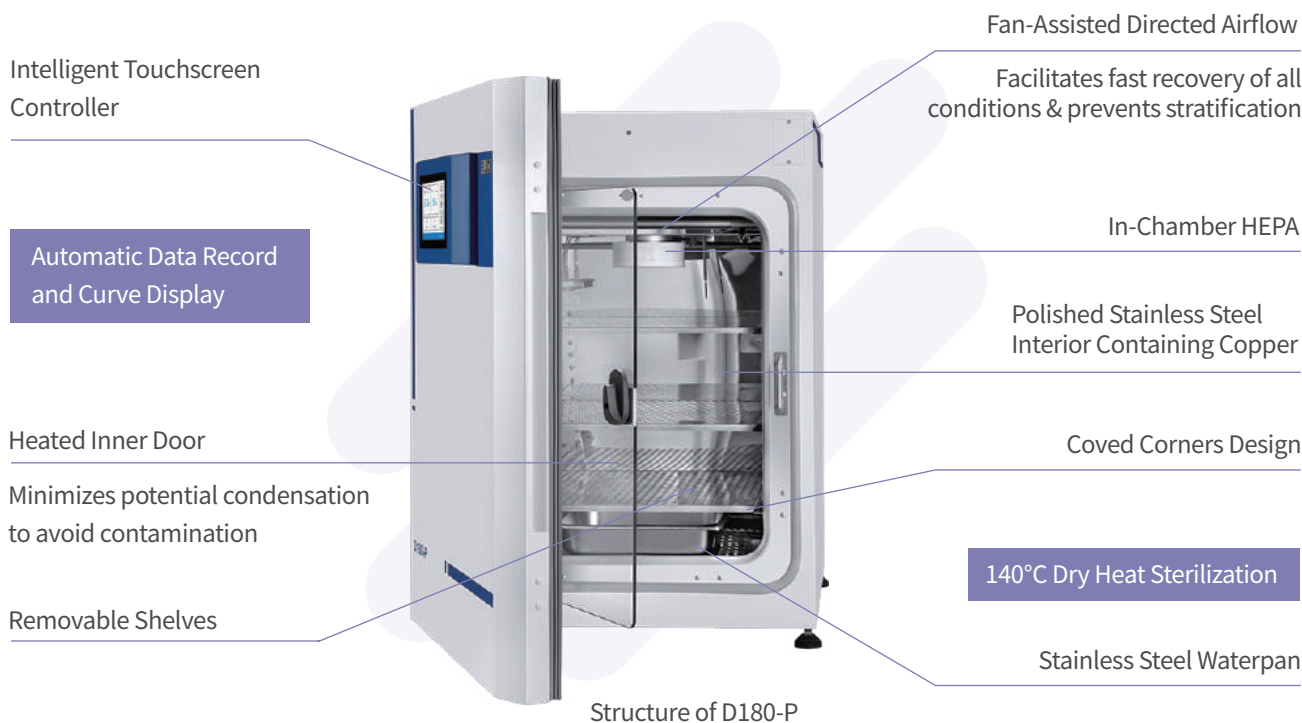
CO₂ Incubator

Provide a more stable cell culture environment

D180-P is a well-designed air-jacketed CO₂ incubator for all kinds of cell lines or tissues culture, including primary cells, stem cells, and so on.

It can provide a more suitable culture environment for cells by controlling temperature, CO₂ concentration precisely and by maintaining a high relative humidity (RH). The built-in 140°C dry-heat sterilization program helps to prevent bacterial contamination. All the data and 7-days performance trend graphing are visible on the 7-inch touch screen, and stored data can be download trough USB.

With reliable temperature stability, pure environment, and simple operation, D180-P will be an indispensable device in the fields of cancer research, stem cell research, immunology research, pharmaceutical research, and neurobiology research.



Product characteristics

Stable environment for cell culture

- High temperature resistant infrared (IR) CO₂ sensor enables real-time monitoring the change of CO₂ concentration.
- Six-sided air jacketed heating method with Pt1000 platinum thermistor significantly shorten the recover time to target temperature.
- Standard humidity sensor monitors real-time humidity changes.

Contamination control of Inner chamber

- In-chamber HEPA filter combined with an active fan system provides ISO 5 (Class 100) air cleanliness.
- 140°C high temperature sterilization provides overnight cycle operation to eliminate potential contamination.

Intelligent operation

- 7-inch touch screen provides complete data visibility including three core parameters (Temp. , CO₂ and rH) and alarm records to monitor incubator operation in real time.
- 8000 operation or alarm records ensure the safety of samples and incubator.
- Customized alarm settings allow users to modify upper and lower alarm limits.
- Within 7 days parameters curve display (Temp. , CO₂ and rH) provides real time monitoring.



High Efficiency Particulate Air Filter System



Stainless Steel Waterpan

► Technical Parameters

Temperature	Control & Range	±0.1°C, 5°C above ambient to 50°C
	Heating Method	Air Jackted
	Uniformity	±0.3°C @ 37°C
	Alarm Setting	±5°C
	Sensor	Pt1000 platinum thermistor
	Controller	PID
	Readability & Stability	0.1°C
CO ₂ Concentration	Sterilization Method	140°C dry heat sterilization
	Control & Range	Better than ±0.1% ; 0-20%
	Sensor	High temperature resistant infrared (IR) sensor
	Inlet Pressure	1.0 bar (recommended)
	Uniformity	±0.3%
Humidity	Readability & Stability	0.10%
	Alarm Setting	±1%
	Humidity Pan Volume	~3.8 L
Shelves	Display	1% RH
	Dimensions	47.0×47.0 cm
	Surface Area (Standard & Max)	214.6 cm ² ; 220.7 cm ²
Size & Weight	Number (Standard & Max)	3 ; 16
	Interior Volume	175 L
	Interior Dimensions	51.0 (W) ×54.7 (D) ×67.5 (H) cm
	Exterior Dimensions	66.0 (W) ×67.0 (D) ×97.0 (H) cm
	Net Weight	110 kg (242.5 lbs)

► Order Information

Cat No.	Product Description
D180-P	CO ₂ incubator (Equipped with humidity display and high temperature sterilization function), 220V-240V VAC 50/60 Hz
D181-P	CO ₂ incubator (Equipped with humidity display and high temperature sterilization function), 120V-120V VAC 50/60 Hz

Automated Cell Counters

RWD Automated Cell Counter adopts Trypan Blue staining method, intelligent image recognition and advanced optical imaging technology to achieve accurate and automatic cell analysis. The algorithm can identify both live and dead cells within 9 seconds. Information such as cell counts, viability, diameter can be obtained by just one-click. With fluorescence cube, C100 can display images in BF and FL channels simultaneously and clearly present cell counts and cell morphology. It is an optimal device to analyze cell viability and transfection efficiency in immunology and vaccine development, cell therapy, tumor research, stem cell, metabolism research and others.

BF



C100-SE Automated Cell Counter

FL



C100 Automated Cell Counter

Product Characteristics

High accuracy

- The self-developed algorithm can identify clustered cells.
- Intelligently cell marks contribute to precise cell recognition.
- RBC counting.
- Low autofluorescence and high-transmit filter enable clear imaging.

Time-saving

- User-friendly UI and built-in user guide interfaces ensure easy operation.
- Up to 1000 counting results can be stored. No need another device for extra storage.

User-friendly

- Autofocus and auto exposure.
- Powerful computing capability ensures high efficiency.

Compact design

- Compact size fits into different placements.
- Removable modular FL cubes allow easy switches among various scenes.

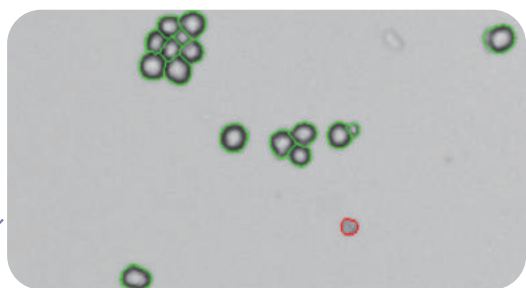
Accessories and consumables



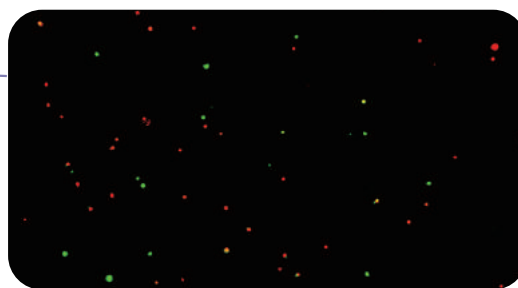
Disposable Cell Counting Slide



FL Cube



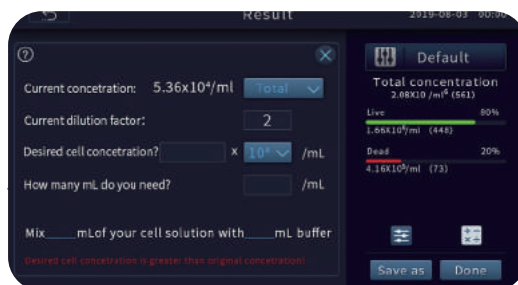
• Clustered cell recognition algorithm



• Clear fluorescence imaging



• Pre-dilution calculator



• Cell splitting calculator

▶ Technical Parameters

Parameters	Description
Model	C100-SE
Optional fluorescence application	N/A
Amplification Factor	2.5×, 5.0 Megapixel
Focus Method	Manual focusing & Autofocusing
Counting Area	2.15 mm × 1.62 mm
Cell Type	Cell lines, stem cells, primary cells, pollens, beer yeast
Cell Size Range	4-60 μm (Optimal: 7-60 μm)
Cell Concentration Range	10 ⁴ -10 ⁷ cells/mL
Cell counting Time	Less than 9s
Historical Data Storage	1000 counting reports and images at most
Languages	Chinese and English
Dimensions	212 mm(W) * 264 mm(H) * 165 mm (D)
Weight	~3.0kg

FL Cube	Excitation	Emission	General Dyes
FL Cube-01	375/28nm	460/50nm	DAPI, Hoechst, BFP
FL Cube-02	480/30nm	535/40nm	Acridine Orange (AO), Calcein-AM, Alexa fluor 488, SYBR Green, FITC, GFP
FL Cube-03	540/25nm	620/60nm	Propidium Iodide (PI), DsRed, dTomato, RFP

Order Information

Cat No.	Product Description
C100-SE	Automated Cell Counter (BF)
C100	Automated Cell Counter (BF + FL)
FL Cube-01	● (Ex : 375/28nm ; Em:460/50nm)
FL Cube-02	● (Ex : 480/30nm ; Em:535/40nm)
FL Cube-03	● (Ex : 540/25nm ; Em:620/60nm)
DS-50	Disposable Slide (50 pcs/box)

Microcentrifuges

M1324R Refrigerated Microcentrifuge

RWD M1324R microcentrifuge is a refrigerated model, it can work stably and quietly at the maximum speed of 15000rpm. Even at the highest speed, it will still make sure the stable temperature centrifugation of samples at -10°C~40°C. Optional rotors for different needs (PCR tubes, 1.5/2 mL EP tubes, etc.).

Small footprint and low noise, touch screen interaction, all your user-defined preset programs can be called by one click. All the functions are designed according to your needs, which simplifies centrifugation.



M1324R Microcentrifuge

Product characteristics

Efficient

- Quick precooling. From RT to 4 °C in only 8 minutes.
- The seamlessly fit for inner cavity winding technology enables high-efficient energy transfer.

Stable and Safe

- High-density foaming technology benefits energy-saving and heat-preservation.
- Standard aerosol-tight rotor with aerospace-grade aluminum alloy withstands high temperature sterilization and avoids biohazards.
- Qualified ultrasonic non-destructive test, Schenck balancing test and extreme blasting test to protect personnel safety.
- Real-time rotor dynamic balancing monitoring system and multiple alarm functions guarantee safe operation.

Simple

- Combination of touch screen and function keys provides quick and convenient setting and parameter use.
- 12 custom programs enable immediate centrifuge operation in multiple scenarios.
- Magnetic condensed water collection pan to eliminate inner water accumulation.
- Mechanical lock design for the centrifuge lid enables easy opening and closing.
- Quick-Lock rotor, closes with only a 1/3 turn.

Compact

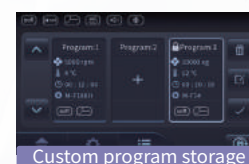
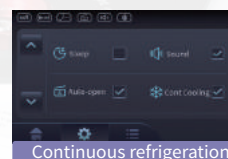
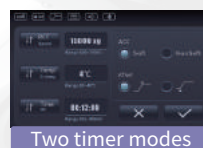
- One-pipette-width compact design.
- Lid hinge design with suspending hovering optionally.

Self-locking lid

Standard
Aerosol-tight rotor

Combination of buttons
and touch interaction

Small, quiet and durable



► Technical Parameters

Parameters	Description
Max. Speed	15000rpm
Max. RCF	21130×g
Max. Capacity	2mL×24
Display	Touch screen
Program	12
Temperature Control	-10°C to 40°C
Noise Level	<54dB (A)
Dimension (W*H*D)	304mm*304mm*517mm
Weight (with rotor)	33kg

► Order Information

Model	Product Description
M1324R	Microcentrifuge, Refrigerated, Rotor with Aerosol-tight lid
M-F24G	Aerosol-tight Lid, 24×1.5/2 mL tube rotor
M-F24	24×1.5/2 mL tube rotor
M-F4PCR	4×PCR tube rotor
M-F18Kit	18×Spin column rotor
M-F24QG	Aerosol-tight Lid, 24×1.5/2.0 mL tube Quick- Lock rotor
M-F24Q	24×1.5/2 mL tube Quick- Lock rotor

M1324 Ventilated Microcentrifuge

RWD M1324 microcentrifuge is a ventilated model, it can satisfy most of common standard applications. And even at the highest speed, it can still work stably and quietly. It is the best choice for laboratory separation and provides great flexibility with its optional rotors for different needs (PCR tubes, 1.5/2 mL EP tubes, etc.).



M1324 Microcentrifuge



Quick-Lock rotor

- Max. speed 15,800 rpm
- Max. RCF 23,444 × g
- 4.3-inch touch screen control
- Low noise and high-speed accuracy
- Multi-step speed up and down available (10 acceleration and braking ramps)
- Quick-Lock rotor, closes with only a 1/3 turn
- Automatic unbalance detection
- Self-locking device, over-speed safety device, and automatic alarm device
- Inching function with brief centrifuging

► Technical Parameters

Parameters	Description
Max. Speed	15800rpm (23444 × g)
Max. Capacity	2mL × 24
Noise Level	≤ 51dB(A)
Display	Touch screen
Program	48
Dimension (W*H*D)	262mm*282mm*385mm
Weight (with rotor)	22kg

► Order Information

Model	Product Description
M1324	Microcentrifuge, Ventilated, Rotor with Aerosol-tight lid
M-F24G	Aerosol-tight Lid, 24 × 1.5/2 mL tube rotor
M-F24	24 × 1.5/2 mL tube rotor
M-F4PCR	4 × PCR tube rotor
M-F18Kit	18 × Spin column rotor
M-F24QG	Aerosol-tight Lid, 24 × 1.5/2.0 mL tube Quick-lock rotor
M-F24Q	24 × 1.5/2 mL tube Quick-Lock rotor

Copyright ©RWD Life Science Co., LTD. 2021. All rights reserved.

No part of this document maybe reproduced or transmitted in any form or by any means without prior written consent of RWD Life Science Co., LTD.

Trademark Notice

RWD, **RWD**瑞沃德, and **RWD**rwdstco.com are trademarks or registered trademarks of RWD Life Science Co., LTD.

Other trademarks, product, service and company names mentioned are the property of their respective owners.

General Disclaimer

The information in this document may contain predictive statements including, without limitation, statements regarding the future financial and operating results, future product portfolio, new technology, etc. There are a number of factors that could cause actual results and developments to differ materially from those expressed or implied in the predictive statements. Therefore, such information is provided for reference purpose only and constitutes neither an offer nor an acceptance.

RWD may change the information at any time without notice.

www.rwdstco.com

The logo consists of the letters 'RWD' in a bold, blue, sans-serif font. The background features a large white circle on the left and a teal-to-blue gradient circle on the right, both partially cut off by the page edges.

RWD Life Science Co.,Ltd

Add: 19-20/F, Building 7A, Shenzhen International Innovation Valley, Dashi 1st Road, Nanshan District, Shenzhen, Guangdong, China **Web:** www.rwdstco.com **E-mail:** rwd@rwdstco.com

RWD Life Science Inc.

Add: 6540 Lusk Blvd, Suite C161 San Diego, CA 92121
Tel: 1-858-900-5879 **Tech support:** service@rwdstco.com

RWD New Products Catalogue-EN-20210811