

RWD

DOM-1001 Digital Microscope



Introduction:

DOM-1001 is a high-end all-in-one digital microscope specialized for surgical experiments. It uses high-end optical components and high-performance digital cameras, and is equipped with an LED ring light source and a cross arm bracket. Excellent ergonomic design and perfect digital technology allow you to obtain the ultimate comfortable control experience.

Features

KEY FEATURES

1 Novel and unique integrated design

Electric adjustment knob combined with foot focus adjustment and **11.6-inch** display screen allows the operator to maintain a comfortable working posture, reducing fatigue and injury

2 Real-time ultra high-definition projection screen

With the infrared remote control, you can directly perform remote control, including many functions such as taking pictures and videos

3 Homogeneous and coaxial optical design

180mm working distance, the lens body can be adjusted at multiple angles, which greatly improves the operating space.

High-end optical components are combined with digital cameras, with LED ring lights and gooseneck lights, and a variety of optional brackets

4 Excellent ergonomic design

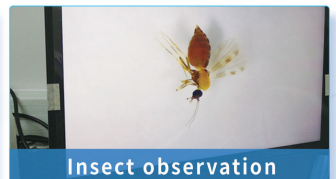
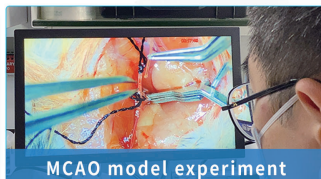
Built-in variable optical components, high depth of field, adjustable magnification **18-100X, 1600W pixel** digital camera, can be connected to a high-definition monitor or laptop for real-time display.

5 Convenient and practical remote control

No need to refocus even when changing magnification

6 Greater operating space

APPLICATION



RWD Life Science Co.,Ltd

Add: 19-20/F, Building 7A, Shenzhen International Innovation Valley, Dashi 1st Road, Nanshan District, Shenzhen, Guangdong, P.R. China Enquiries: market@rwdstco.com

RWD Life Science Inc.

Add: 850 New Burton Road, Suite 201, Dover, DE 19904 (New Office)
Tel: (858)900-5879 E-mail: service@rwdls.com