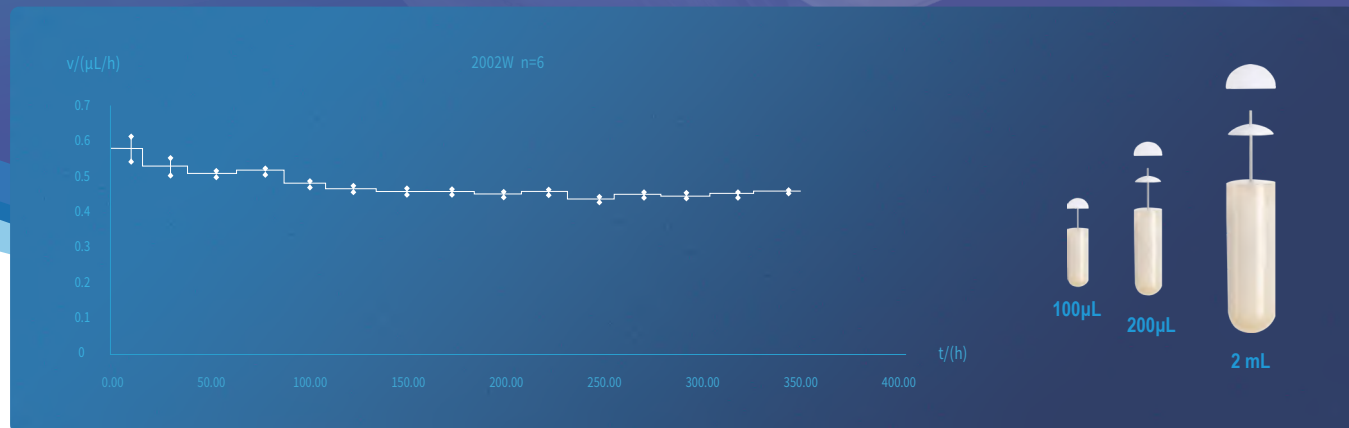


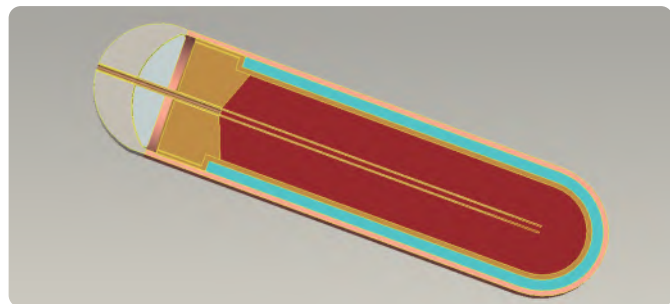
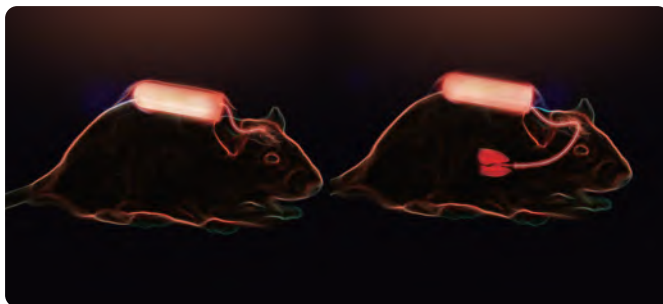
# Mini Osmotic Pump

The mini osmotic pump has become the best tool for continuous dose of unrestrained laboratory animals. It can be implanted subcutaneously or intraperitoneally in animals. Minimizes side effects and experimental variables, and reduces the risk of stress due to frequent animal handling. And it is used for continuous delivery of a wide range of drugs, including antibodies, growth factors, cytokines, chemotherapeutics, addictive drugs, hormones, steroids and more.



## Advantages

- Animals are dosed continuously at the predetermined dose for extended periods, including nights and weekends;
- Easy to use, without complex programming or software to learn;
- Once implanted, they operate unattended for durations up to 4 week, eliminating the need for repetitive dosing & frequent animal handling;
- Small size, available for use in mice, rat and larger animals;
- Catheter attachment enables direct administration of agents into a specific organ or tissue.



The RWD Osmotic Pumps consist of three concentric layers: the inner drug reservoir the osmotic layer, and the outer. When the pump is implanted water is absorbed through the outer membrane. The water entering the pump expands the osmotic layer, which compresses the flexible, impermeable reservoir.

## Product standard

Capsule	Drug capacity	100 $\mu$ L				200 $\mu$ L				2 mL		
	Type	1003D	1001W	1002W	1004W	2003D	2001W	2002W	2004W	2ml1W	2ml2W	2ml
	Duration	3D	1W	2W	4W	3D	1W	2W	4W	1W	2W	4W
	Pumping Rate ( $\mu$ L/hr)	1.0	0.5	0.25	0.125	2.0	1.0	0.5	0.25	10.0	5.0	2.5
Flow regulator	Cap	Without				PE material						
	Draft tube	304 stainless steel material										
Infusion tube	Syringe	Flat head for the injection of liquid										

## Standard Kits

Name	Quantity
Capsule	10
Flow moderator	10
Filling tube	1
Product manual	1



## Choice Kits



Name	Quantity	Standard
Catheter	10 root	15cm
CCT kit	1 bottle	4 package
Product manual	1	

## Brain infusion Kits

Name	Quantity
Infusion casing	10
Connect catheter (ethylene or polyethylene)	10
Depth adjustment gaskets	1
Product manual	1



## RWD Life Science Co.,Ltd

Add: 19-20/F, Building 7A, Shenzhen International Innovation Valley, Dashi 1<sup>st</sup> Road, Nanshan District, Shenzhen, Guangdong, P.R. China    Enquiries: market@rwdstco.com

## RWD Life Science Inc.

Add: 850 New Burton Road, Suite 201, Dover, DE 19904 (New Office)

Tel: (858)900-5879    E-mail: service@rwdls.com

RWD Mini Osmotic Pump -Flyer-V1.0-20210615-EN

