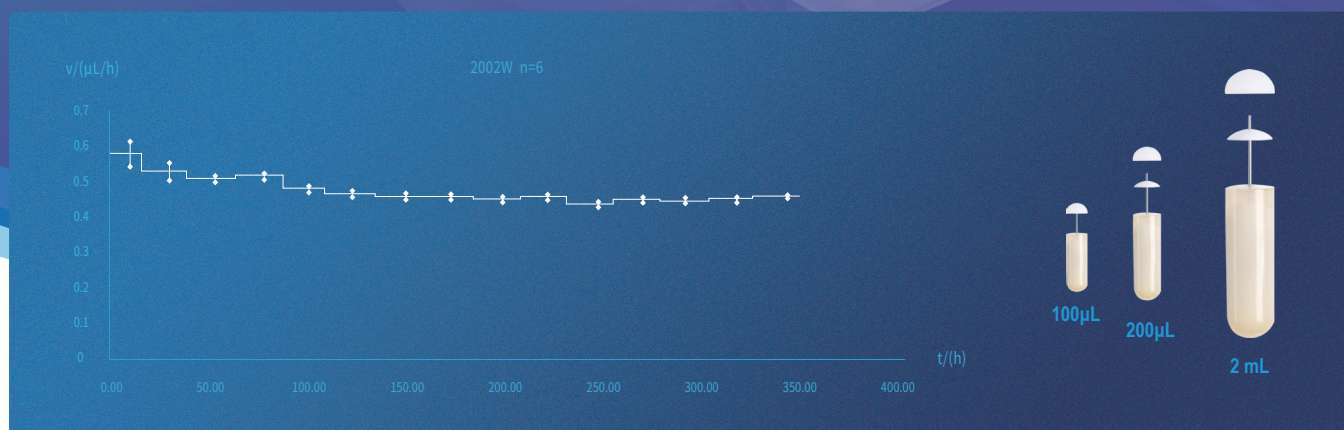


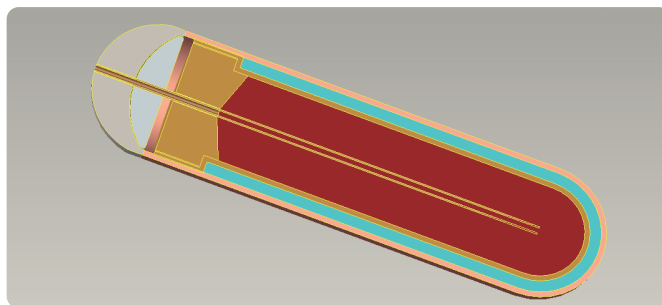
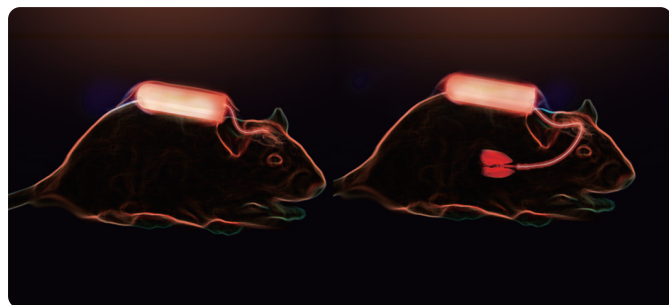
# Mini Osmotic Pump

The mini osmotic pump has become the best tool for continuous dose of unrestrained laboratory animals. It can be implanted subcutaneously or intraperitoneally in animals. Minimizes side effects and experimental variables, and reduces the risk of stress due to frequent animal handling. And it is used for continuous delivery of a wide range of drugs, including antibodies, growth factors, cytokines, chemotherapeutics, addictive drugs, hormones, steroids and more.



## Advantages

- Animals are dosed continuously at the predetermined dose for extended periods, including nights and weekends;
- Easy to use, without complex programming or software to learn;
- Once implanted, they operate unattended for durations up to 4 week, eliminating the need for repetitive dosing & frequent animal handling;
- Small size, available for use in mice, rat and larger animals;
- Catheter attachment enables direct administration of agents into a specific organ or tissue.




The RWD Osmotic Pumps consist of three concentric layers: the inner drug reservoir the osmotic layer, and the outer. When the pump is implanted water is absorbed through the outer membrane. The water entering the pump expands the osmotic layer, which compresses the flexible, impermeable reservoir.

## Product standard


Capsule	Drug capacity	100μL				200μL				2 mL		
	Type	1003D	1001W	1002W	1004W	2003D	2001W	2002W	2004W	2ml1W	2ml2W	2ml4W
	Duration	3D		1W2W	4W	3D	1W	2W	4W	1W	2W	4W
	Pumping Rate (μL/hr)	1.0		0.6.25	0.125	2.0	1.0	0.5	0.25	10.0	5.0	2.5
Cap		Without				PE material						
Flow Regulator		304 stainless steel material										
Infusion tube		Flat head for the injection of liquid										

## Standard Kits

Capsule	10
Flow moderator	10
Incubator tube	10
Disposable filling tube	1
Product manual	1




## Chemical compatibility test kit (optinal)

	Name	Quantity
	CCT kit	1 bottle
	Product manual	1

## Osmotic Pump Kit (optinal)

Name	Quantity			
	Brain Infusion Kit (1-3mm)	Brain Infusion Kit (3-5mm)	Brain Infusion Kit (1-9mm)	Catheter Delivery Kit
Brain Infusion Cannulae	10	10	10	
PU Catheters	10	10	10	10
Filling Tube	1	1	1	1
Depth-Adjustment Spacers	40	40		
Product manual	1	1	1	1



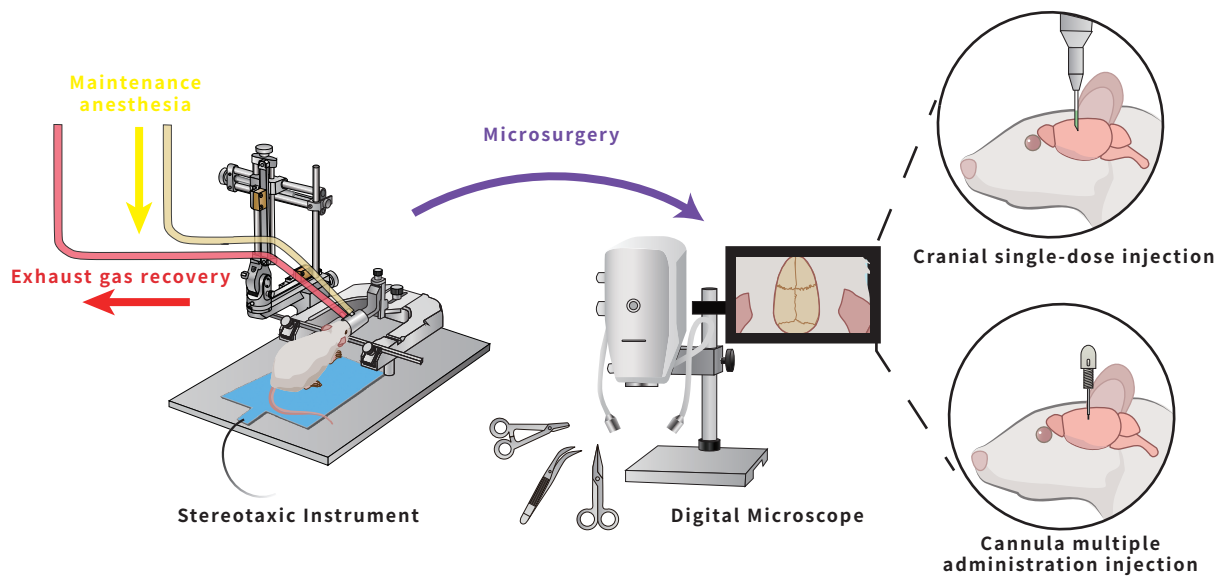
## Commonly used solvents known to be compatible with RWD pumps:

NO	List of Commonly Used Solvents
1	Acids, with pH greater than 1.8
2	Bases, with pH less than 14
3	Culture media, 1% benzyl alcohol as bacteriostatic
4	$\beta$ – Cyclodextrins
5	Dextrose, up to 5%, in water or NaCl
6	N,N-Dimethyl formamide (DMF), up to 25% in water
7	DMSO, up to 50% in water or polyethylene glycol
8	DMSO, up to 50% in ethanol ( $\leq 15\%$ )
9	Ethanol, up to 15% in water
10	Glycerol
11	1-Methyl-2-Pyrrolidone, up to 12.5% in water
12	Phosphate buffer
13	Polyethylene glycol 300 or 400, neat or in water
14	Propylene glycol, neat or in water
15	Ringer's solution, with or without lactate
16	0.9% normal saline
17	Serum (rat, mouse, etc.)
18	Corn oil
19	Water, distilled
20	Tween 80, up to 2%

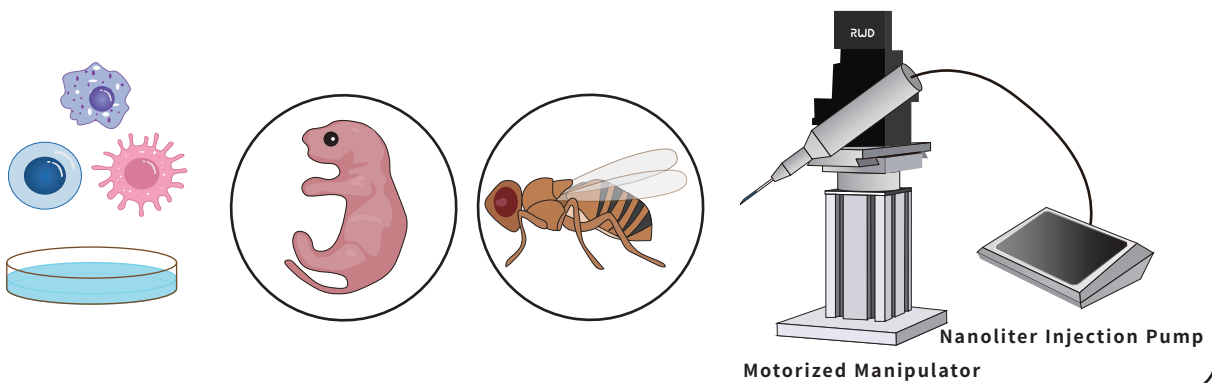


Welcome to try it for free

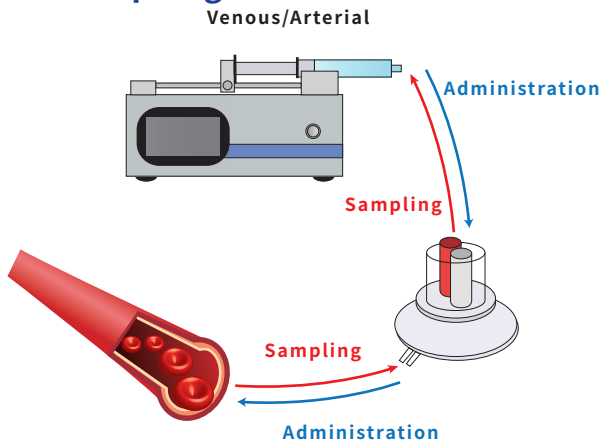
## ① Cranial Single/Multiple Administration



## ② Cell/Embryo/Insect Injection

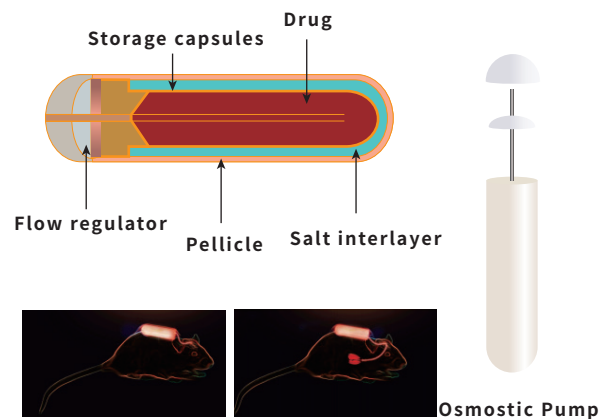


## ③ Sampling and Administration



## ④ Long-term administration

Subcutaneous Part/Abdominal cavity/Brain/Jugular vein



### RWD Life Science Co.,Ltd

Add: 9/F, 19/F, 20/F, Building 7A, 9/F Building D, Shenzhen International Innovation Valley, XiLi Street, Dashi 1st Road, Nanshan District, Shenzhen E-mail: [rwd@rwdstco.com](mailto:rwd@rwdstco.com)

### RWD Life Science Inc.

Tel: (858)900-5879 Support: [service@rwdls.com](mailto:service@rwdls.com) Web: [www.rwdstco.com](http://www.rwdstco.com)