



RWD

PRODUCT CATALOG

For Pathological Diagnosis
and Cellular & Molecular Biology Research

©RWD Life Science Co.,LTD All Rights Reserved. | www.rwdstco.com

RWD Life Science Inc.

Add: 10410 Corporate Drive, Sugar Land, TX 77478, USA

Tel: 1-858-900-5879 **Tech support:** service@rwdstco.com

RWD Life Science Co.,Ltd

Add: Building 7A (9th, 19th-20th Floors), Building 7D (9th Floor), Shenzhen International Innovation Valley, Dashi 1st Road, Nanshan District, Shenzhen, Guangdong, China

Web: www.rwdstco.com **E-mail:** rwd@rwdstco.com

MYH-细胞分子与病理手册-EN-20260410

Company Profile

RWD Life Science specializes in life science, animal healthcare, and medical devices. Founded in 2002 and headquartered in Shenzhen, our products and services cover more than 100 countries and regions. We are dedicated to contributing our wisdom and effort to the improvement of the quality of life. Moreover, we are firmly committed to being a globally-advanced science enterprise.

Oriented by customer demands and motivated by excellent talents, RWD is continuously establishing long-term partnerships with domestic and foreign universities. We also invest in our R&D to achieve innovation in our products, technologies, and service. We aim to provide solutions with higher quality to our customers.

Based on the Chinese market and serving customers around the world, RWD has not only achieved a strong reputation and advantage in the fields of respiratory anesthesia, neuroscience research, animal behavior research, surgery and nursing, and pathological analysis, but also gained constant trust and support from our domestic and foreign customers after our efforts during the past 20 years.

Looking into the future, we shall adhere to the core values of quality, integrity, responsibility and contribute to the advancement and development of pre-clinic and medical clinic applications.

THE DEVELOPMENT COURSE

2002-2006

- Founded in Shenzhen, China
- Launched a self-developed brain stereotaxic instrument
- Products were sold to the US and European markets

2007-2014

- Launched the first micro-drug delivery system in China, breaking the monopoly of foreign technology
- Launched a global brand strategy by officially registering the “RWD” trademark in the US and China.
- Awarded the China “National High-tech Enterprise” credential.
- Launched animal anesthesia machines & ventilators
- Launched veterinary clinical animal diagnosis and treatment solutions, enter the field of animal health

2015-Now

- Achieved market targets for products sold in 100 countries around the world.
- Helping with talent cultivation: Launched the “RWD Basic Medicine (Notable) Scholarship” to well-known universities in China launched a donation program for animal anesthesia machines for colleges and universities
- Developed integrated solutions for brain science research
 - The market share of stereotaxic instruments in China as the first
- Developed solution for cell research.
 - the market share of animal anesthesia machines in China among the top rank
- Authenticated as “Guangdong Life Science Analytical Instruments Technology Research Center”
- Launched microtomes, entering the field of clinical medicine
 - Launched the first Automated Stereotaxic Instruments in China
- Serviced for 17000+ global customers
 - The No. of employee attain the scale of 600+

CATALOGUE

01 Minux® Rotary Microtomes

05 Minux® Cryostats

09 Single Cell Suspension Dissociator

11 Tissue Enzymatic Digestion Kit

12 Magnetic Cell Separation System (Column Based)

15 Magnetic Cell Separation System (Column Free)

18 CO₂ Incubator

22 Automated Cell Counters

27 Centrifuge

36 Western Blot Imager

Minux® Rotary Microtomes(S700/S700A)

Rotary microtome is a device for paraffin section,widely used in medical and biological research. It is used for pathological diagnosis in clinical,and used for research at the tissue and cell level.



► Features:

Visual pointer

- » Designed with the visual pointer on precise positioning system, easy to adjust the sample to the target angle, reducing trimming and sample waste.
- » Adjust multiple devices to the same angle easily and quickly.

The side knobs

- » Integrated with the machine, ergonomic design, make operation more comfortable and coordinated.
- » The sample feeding speed can be adjusted freely between 0-1800µm/s, more choice and more efficient.
- » Durable military-grade devices, service life is more than 20 million times.

Automatic section

- » It is stable and maintains slice consistency.
- » No extra skills required, easy to complete the operation.
- » Some specimens such as embryos and brains need to be cut for hundreds of pieces. It is hard for you, but easy for automatic section.

Easily removable waste tray

- » With magnetic function, easy to disassemble and install.
- » Special coating materials tray, easy to clean up, shorten the cleaning time to a few seconds.

► Technical Parameters

Parameters	Model	S700 Semi-Automated	S700A Fully-Automated
Section thickness setting range: 0.5 - 100 µm		✓	✓
Trimming section thickness setting range: 1 - 800 µm		✓	✓
Electric coarse feed speed: 0-1800µm/s		✓	✓
Specimen retraction: 0-250µm		✓	✓
Specimen feed: 28mm, vertical stroke: 70mm		✓	✓
Specimen orientation: X/Y axis 8°		✓	✓
Maximum specimen size: 60*50*40mm		✓	✓
Automated mode and manual mode switch			✓
Emergency stop button			✓
Cut window function			✓
Slice speed selection: 0.5-450mm/s			✓
Four slice modes: Int.,Single,Cont., Multi.			✓
Foot Switch (optional)			✓

Cat No.	Product Description
S700A	Fully-Auto rotary microtome
S700	Semi-Auto rotary microtome
S700-F3	Universal clamp
S700-F4	Standard clamp
S700-F7	Blade holder assembly
S700-F9	Blade holder upper bracket
S700-F10	Easy-clean waste tray
S700A-F3	Foot Switch for Rotary & Cryostat Microtome (optional)

► Disposable Microtome Blades-low profile



► Features:

- Sharp and durable, cost-effective
- For rotary microtomes and cryostats use
- Packed in a push-out distribution box for easy access

► Order Information

Cat No.	Product Description
PB-2	Disposable Microtome Blades, 80mm*8mm*0.25mm, 50 pcs, for paraffin and frozen section

Minux® Rotary Microtomes (S710/S712)



► Features:

Precise sampling system

- Precise cross roller bearings and screw rod, combined with a five-phase high-resolution stepper motor and a Link block made of aviation aluminum, form a high-precision sampling system to ensure section quality.
- Stable gantry structure design, high hardness alloy transfer, improve the rigidity of the host, and the hard tissue section is still accurate.

Precise knife holder

- The position change is extremely small after changing the knife edge by moving sideways.
- Scales on the knife holder to determine the best position of the blade holder.

Dual hand wheel locking system

- Handwheel lock on top of the handwheel, safe to replace the sample. Any position lock to brake the handwheel in any position.
- Sample advance and retreat, trim/section conversion, thickness adjustment, position memory and half-knife function can be realized by using separate control panel.

Hand wheel balance at any position

- The handwheel can be stopped at any position, making it more secure to use

Knife guard device

- The knife guard covers the full length of the blade to avoid potential injury during operation.

► Convenient



Rapid positioning

- Unique visual pointer, visible angle adjustment. Sample positioning is faster and more precise.
- Adjust multiple devices to the same angle easily and quickly.



Convenient operation

- The small handwheel injection method is used with the side knob to adjust the slice thickness, which is ergonomically designed and the operation is more comfortable.
- The single-turn sampling distance of the small handwheel can be adjusted to meet individual needs.
- The torque at any position is lower than 2.5 kgf·cm, the operation is easy, and it is easy to use all day.



Easy to clean

- With magnetic function, easy to disassemble and install.
- Large capacity, special coating waste tray, easy to clean up, shorten the cleaning time to a few seconds.

Information backtracking

- With historical record system, operation and alarm logs are shown on 5-inch touch screen, to query the microtome usage and facilitate information tracking.

► Available accessories



Universal clamp
S700-F3



Standard clamp
S700-F4



Blade holder assembly
S700-F7



Blade holder upper bracket
S700-F9



Separate Control Panel
S710-F1

► Quick Compare Chart

Parameter	Model	S710	S712
Section thickness range:0.5-100 μm		✓	✓
Trimming section thickness range:1-800 μm		✓	✓
Electric coarse feed:900/1200/1800μm/s adjustable		✓	✓
Specimen retraction:0-250 μm adjustable		✓	✓
Horizontal feed: 28mm		✓	✓
Vertical stroke:70mm		✓	✓
Specimen orientation: X/Y axis 8°		✓	✓
Maximum specimen size:60*50*40mm		✓	✓
WxDxH: 490*430*315mm		✓	✓
Machine Weight:30kg		✓	✓
Rock mode		✓	✓
Position memoryfunction		✓	✓
Separate Control Panel		Option	Standard

Minux[®] Cryostats (FS900)

Cryostat is a device for rapidly cooling tissue to a certain hardness under low temperature conditions and then slicing. It is a quick and easy method.

Hospitals mainly use it for rapid pathological diagnosis during surgery. Researchers use it for preparation of biological tissue samples for in situ hybridization, immunohistochemistry, etc.



► Features

Stable and Reproducible High-Quality Section

- The chamber and specimen head**
 Cooled separately by high-performance dual compressors, breaking the traditional overall cooling mode and achieving precise temperature control of the dual system. According to the characteristics of different samples, the optimal slicing temperature can be quickly and accurately adjusted to ensure slicing quality.
- Blade Holder Refrigeration**
 Accurately control the section temperature, avoid sample thermal damage, reduce sample deformation and adhesion during the section process, and reduce repetitive operations. Constant low temperature can also slow down the wear rate of blades and extend their service life.
- Temperature-Adjustable Freezing Station**
 Ensures rapid freezing of the sample and reduces the production of ice crystals. At the same time, it also avoids sample freezing and cracking caused by low temperature, maximizes the preservation of the original morphology and biological activity of the sample, and provides high-quality samples for pathological diagnosis and scientific research analysis. At the same time, rapid freezing can improve the efficiency of laboratory sample processing, reduce waiting time, and achieve efficient sample circulation.
- ±2°C Precise Temperature Control With Fully-open Windows**
 The high-precision variable frequency temperature control system is equipped with precision temperature sensors to achieve real-time monitoring of the temperature of the chamber, and automatically adjust the temperature of the chamber. Chamber temperature within 2°C during continuous operation (3+ hours with open windows), reducing the impact of temperature differences caused by frequent window opening and closing, improves section efficiency.

Protecting Personnel Health and Organizational safety

- Ag+ Antibacterial Coating**
 The standard nano silver ion antibacterial coating shell can cause the destruction or functional impairment of microbial common components through contact reactions, resulting in the loss of cell division and proliferation ability and death. Effectively reducing the growth of pathogenic microorganisms outside the equipment, reducing the risk of tissue infection, and lowering equipment maintenance costs.
- Low-temperature UV Disinfection System**
 The intelligent low-temperature UV lamp disinfection system with an ultra-long lifespan (8000h), certified by authoritative certification can be set to automatic and manual disinfection according to needs. The disinfection time is available in 30 minutes and 180 minutes respectively, with higher disinfection quality and lower maintenance costs.
- Waste Liquid Bottle Management System**
 Equipped with monitoring of the capacity and location of waste liquid bottles, by gravity sensors, it can accurately capture real-time changes in the weight of the liquid inside the bottle, effectively avoiding the risk of waste liquid overflow caused by misjudgment of liquid level. Timely full load warning can be obtained, reducing manual monitoring costs, significantly improving management efficiency, and ensuring laboratory safety.

Improve Section Efficiency

- Multiple Control Panels**
 The 10.1-inch overall touch panel is paired with dedicated control panels on the sides, making it more convenient to adjust functional parameters without frequent switching of settings. The friendly human-computer interaction design greatly improves the smoothness of operation, reduces errors caused by complex operations, and meets the usage habits of different users.
- Multiple Freezing Sites**
 The new "2+2" freezing station design meets the experimental and diagnostic needs of multiple samples and types of samples. The temperature of the two semiconductor freezing sites is as low as -60°C, ensuring rapid freezing of the sample, reducing crystal production, and also meeting the requirements of large-scale and urgent frozen slicing scenarios.
- Microscope Slide Placement Area**
 Set up a slide placement area on the right side of the screen for easy spread placement of labeled slides, making it convenient for operators to quickly identify and retrieve them. Optimize workflow to ensure efficient and orderly slicing work.
- Hierarchical User Management**
 Adopts the management mode of administrators for multiple ordinary users. Administrators can flexibly allocate resources, assign responsibilities to individuals, facilitate management, improve overall work efficiency, and ensure compliance in the use of data and equipment, providing guarantees for the stable operation of the organization.

► Technical Parameters

Section range: 0.5-100μm; 0.5-5μm in 0.5μm increments; 5-20μm in 1μm increments; 20-30μm in 2μm increments; 30-60μm in 5μm increments; 60-100μm in 10μm increments

Trim range: 1-800μm; 1-10μm in 1μm increments; 10-20μm in 2μm increments; 20-50μm in 5μm increments; 50-100μm in 10μm increments; 100-800μm in 50μm increments

Specimen retraction: 0~250 μm

Specimen feed: 28 mm ± 1 mm

Vertical stroke: 70 mm ± 1 mm

Electric coarse feed: 600 μm/s, 1800 μm/s

Specimen orientation: 8° (X/Y axis), 360° (Z axis)

Cryochamber temperature range: 0 ~ -35 °C

Specimen cooling temperature range: -10 ~ -50 °C

Blade holder cooling temperature range: -10 ~ -35 °C

Freezing station temperature: -10 ~ -42°C

Minux® Cryostats (FS800/FS800A)



► Features

Stable

- **Stable temperature:** advanced temperature control system, small temperature fluctuations. Even if the window is opened for more than 1 hour, the temperature is still stable.
- **Stable slice quality:** high-precision cross rail and screw, five-phase high-resolution sampling motor and horizontal sampling slider made of aviation aluminum, form a precise sampling system to ensure stable slice quality.

Safe

- **UVC disinfection:** the latest low-temperature UVC disinfection technology. The irradiation intensity can effectively kill bacteria and viruses, disinfect the inner surface and the air of the cabinet, and reduce the risk of contamination by infectious materials.
- **Waste liquid management system:** a waste liquid volume display on the touch screen. There are reminders of full bottle and not in place to prevent waste liquid from flowing out and contaminating the ground.

Efficient

- **Efficient operation:** the color touch screen, with a joystick that integrates coarse sample feeding, trimming and section switching, and slice parameter adjustment, constitutes an efficient operating system.

- **Quick positioning:** precise positioning system with $\pm 8^\circ$ visual pointer, easy to adjust the specimen clamp to the target angle, reducing trimming and sample waste.
- **Automatic sleep and wake-up:** saving energy, simplify manual operation and reduce waiting time.
- **Sample installation and marking:** Buckle design, convenient installation and firm fixation. The unique label design of specimen discs makes it easy to record and identify each sample to prevent confusion.
- **Efficient and thorough defrosting:** automatic defrosting for cryochamber, specimen head, quick-freeze shelf, more thorough. For manual defrosting, there are different parts to choose to improve efficiency.

► Technical Parameters

Parameters	Model	FS800 Semi-Automated	FS800A Automated
Section thickness setting range: 0.5-100 μ m		✓	✓
Trimming section thickness setting range: 1 - 800 μ m		✓	✓
Electric coarse feed speed: 0-3000 μ m/s adjustable		✓	✓
Specimen retraction: 0-250 μ m		✓	✓
Specimen feed: 28mm		✓	✓
Vertical stroke: 70mm		✓	✓
Specimen orientation with visual pointer: X/Y axis 8° , Z axis 360°		✓	✓
Number of refrigerated sites: 15		✓	✓
Number of fast cooling sites: 2		✓	✓
Cryochamber temperature range: $0^\circ\text{C} \sim -35^\circ\text{C}$		✓	✓
The temperature range of the sample holder: $-10^\circ\text{C} \sim -50^\circ\text{C}$		✓	✓
Automatic and manual defrosting		✓	✓
Automatic and manual UVC disinfection		✓	✓
Automated mode and manual mode switch			✓
Emergency stop button			✓
Cut window function			✓
Slice speed selection			✓
Four slice modes: Int.,Single,Cont., Multi.			✓
Pedals(optional)			✓

► Order Information

Cat No.	Type	Product Description
FS800	Specimen	Semi-Auto,with UVC disinfection,specimen cooling system
FS800A	Auto	Fully-Auto,with UVC disinfection,specimen cooling system,auto section function

*Most popular cryostat with individually controlled temperature settings on both the cryochamber and the specimen holder.

Single Cell Suspension Dissociator

RWD Single cell suspension dissociator uses tissue processing tubes, tissue dissociation kits, and built-in optimization programs for preparing high-activity single-cell suspension and tissue homogenate. The preparation of single-cell suspension with high cell viability can be completed within 15-30 minutes, which makes the experiments more reproducible. 4 or 8 independent operating channels and heating jackets can automate the processes and improve the efficiency of tissue processing. It is widely used in single-cell sequencing, primary cell culture, fluorescence activated cell sorting, cell therapy, and other research fields.



Product Characteristics

Intelligent

- Pre-defined standard processes and customized processes supported.
- Processes can be imported and synchronized via USB ports.

Gentle

- Stable motor speed ranges from 0 to 4000 rpm.
- Customized tissue dissociation kits and tissue processing tubes can ensure cell viability and reduce experimental losses.

Safe

- Multiple alarms guarantee the safety of both operators and samples.
- Fully sealed tube prevents contamination of cells.

Efficient

- 4 or 8 independent channels work simultaneously for different tissue processing.
- Heating jackets are available for fully automated sample preparation.
- Capable of single-cell suspension and tissue homogenate.

Technical Parameters:

Model	DSC-200	GTD-2*	DSC-410	GTD-4*	DSC-810	GTD-8*
Channels	2		4		8	
Temperature	37°C					
Speed	0~4000rpm					
Sample Volume	20~4000mg					
Buffer Volume	0.3-10mL					
Screen	7 inches.touch screen					
User Programs	Default programs+Custom programs+500storable programs					
Weight	9 kg		10.3 kg		18 kg	
Dimensions(W*D*H)	215*380*190 mm		215*380*190 mm		417*394*196 mm	

* Designated for U.S. market only

Order Information

Cat. No.	Product Description	Specification
DSC-200	Single Cell Suspension Dissociator	2 channels
DSC-410	Single Cell Suspension Dissociator	4 channels
DSC-810	Single Cell Suspension Dissociator	8 channels
SCT-25	Tissue Processing Tube	25 pcs/box
SCT-100	Tissue Processing Tube	100 pcs/box
HJ-400	Heating Jacket	4 pcs/box

Consumables

Tissue Processing Tube

- Ethylene oxide(EO) sterilized
- Independent packaging make it convenient for storage and use



Order Information

Model	SCT-25	SCT-100
Sample volume	20-4000 mg	
Buffer volume	0.3-10 mL	
Dimensions	35*89 mm	
Package	25pcs/box	100pcs/box

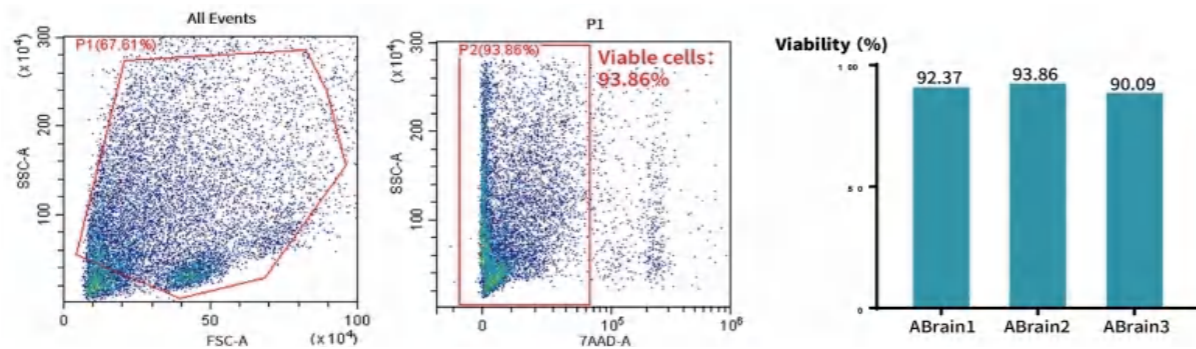
Tissue Enzymatic Digestion Kit

Engineered for efficient tissue dissociation, this kit delivers high-viability primary single-cell/nucleus suspensions. The optimized enzyme cocktail gently dissociates the extracellular matrix while preserving cell structure and surface epitope integrity. Achieve high yield and high viability—ready for flow cytometry, primary culture, single-cell/nucleus sequencing, and organoid construction.

Data Presentation

High Viability in Adult Brain Tissue

Adult mouse brain (6-8 weeks) dissociated using the RWD Adult Mouse/Rat Brain Digestion Kit (#DHABE-5003) and a single cell suspension dissociator. Cell viability was assessed by 7-AAD staining and flow cytometry, showing 93.86% viability (n=1). The kit consistently achieves >90% viability.



Order Information

Cat. No.	Product Description	Number of reactions
DHTE-5001	High Activity Tumor Tissue Enzymatic Digestion Kit (Mouse)	50T
DHNBE-5002	High Activity Neonatal Brain Enzymatic Digestion Kit (Mouse and Rat)	50T
DHABE-5003	High Activity Adult Brain Enzymatic Digestion Kit (Mouse and Rat)	50T
DHGTP-5004	High Activity General Tissue Enzymatic Digestion Kit II	50T
DHTEH-2505	High Activity Tumor Tissue Enzymatic Digestion Kit (Human)	25T
DHDR-5006	High Efficiency Debris Removal Kit	50T
DHIE-5007	High Activity Intestine Tissue Enzymatic Digestion Kit (Mouse)	50T
DHBTE-2508	High Activity Brain Tumor Enzymatic Digestion Kit	25T
DHWSE-2509	High Activity Whole Skin Enzymatic Digestion Kit (Mouse)	25T
DHAE-5010	High Activity Adipose Tissue Enzymatic Digestion Kit (Mouse and Rat)	50T
DHME-5012	High Activity Muscle Tissue Enzymatic Digestion Kit (Mouse and Rat)	50T
DHNE-2511	High Efficiency Nuclei Extraction Kit	25T
DHHE-2515	High Activity Hepatocyte Extraction Kit (Mouse and Rat)	15T
DHUTE-2516	High Activity Umbilical Cord Enzymatic Digestion Kit (Human)	25T
DHFTE-2517	High Activity FFPE Tissue Enzymatic Digestion Kit	25T
DHNCE-2518	High Activity Neonatal Mouse And Rat Heart Enzymatic Digestion Kit	25T

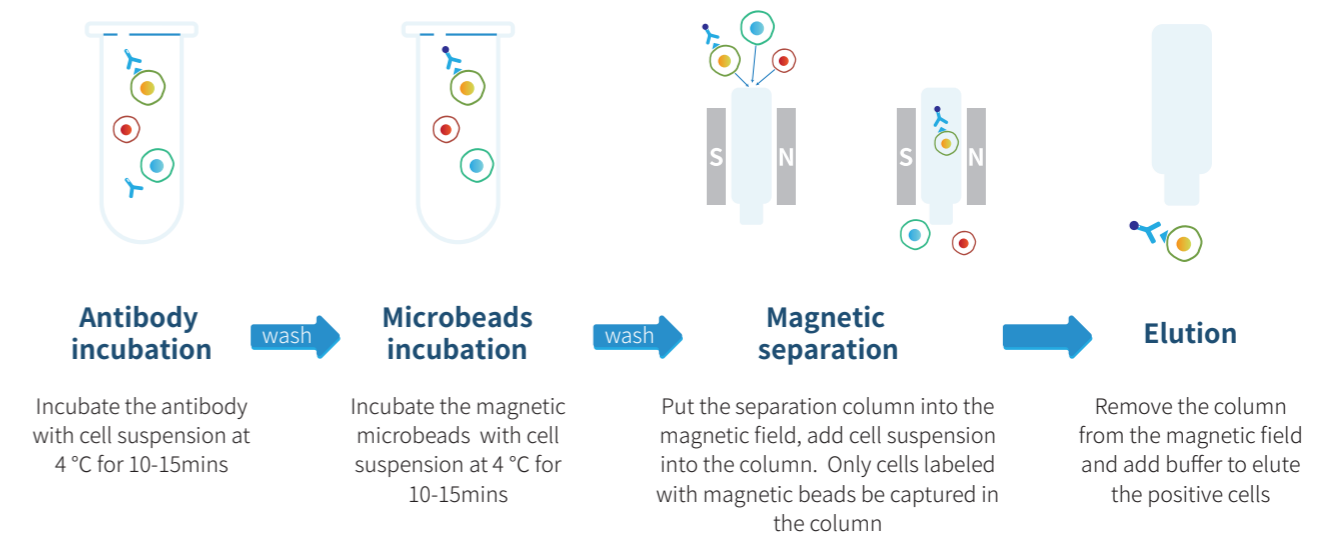
Magnetic Cell Separation System (Column Based)

RWD cell separation products include self-developed magnetic microbeads cell separation kits and cell separation columns, which can obtain target cells with high purity and high viability through simple operation. Nano-sized magnetic beads do not need elution, and the separated cells can be directly used in downstream experiments such as flow cytometry, cell culture, single-cell sequencing, etc.



Application field:

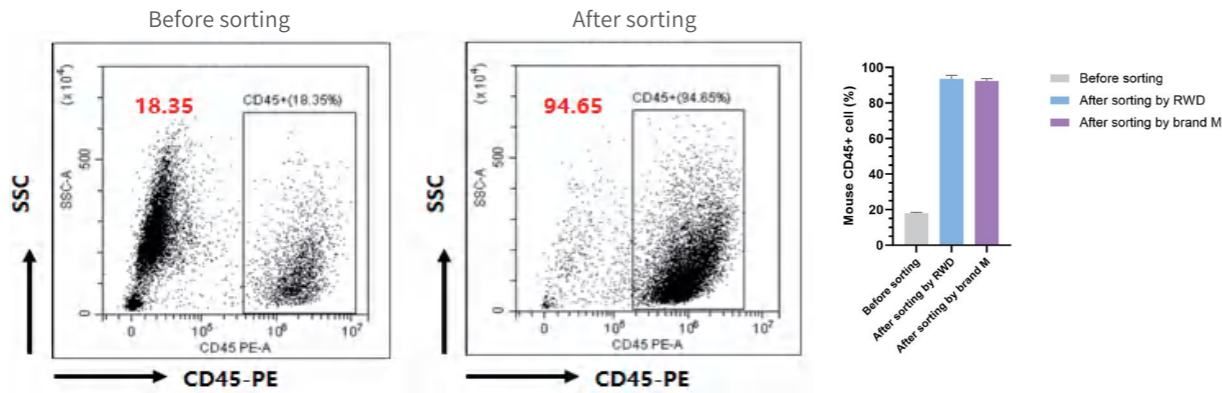
Immunology research / Oncology research / Neuroscience / Stem cell research / Cell therapy



► Data Presentation

Mouse CD45+ Cell Separation Kit-200T (Column Based,Positive)

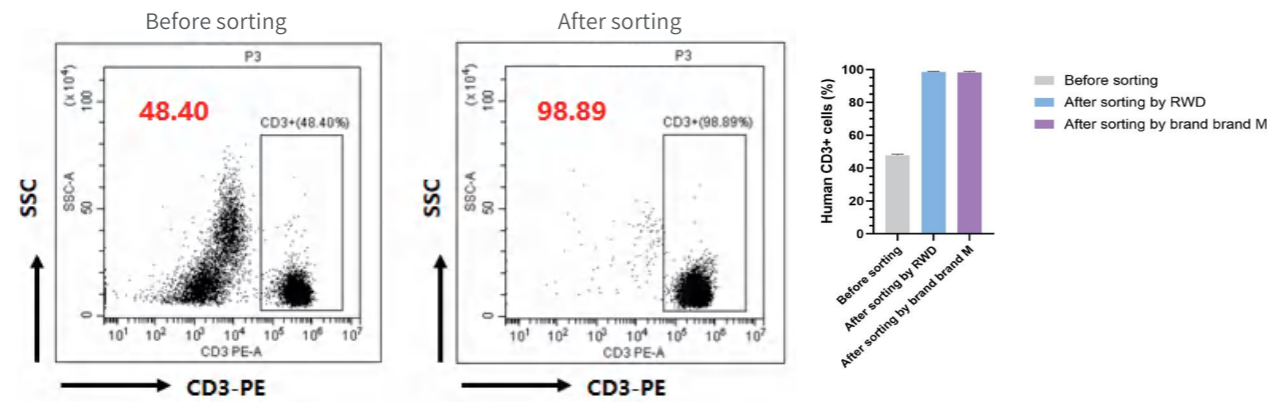
- Sample type: CT26.WT colon cancer tissue



□ CD45+ cells were isolated from mouse CT26.WT colon cancer tissues using the Mouse CD45+ Cell Separation Kit (K1304-10, RWD). Flow cytometric analysis confirmed that the proportion of CD45+ T cells was approximately 18.35% prior to isolation. Following isolation, cell purity reached 94.65% (gated on viable single cells). Importantly, no significant difference in cell viability was observed between pre- and post-isolation samples. The isolated cells were deemed suitable for direct use in downstream experimental applications, demonstrating stable performance.

Human CD3+ Cell Separation Kit-100T (Column Based,Positive)

- Sample type: Human PBMC



□ The Human CD3+ Cell Separation Kit (K1201-10, RWD) was employed to isolate CD3+ T cells from human peripheral blood mononuclear cells (PBMCs). The result was validated by flow cytometry. Prior to isolation, CD3+ T cells constituted 48.40% of the sample. Post-isolation, cell purity consistently exceeded 95% (gated on viable single cells). No significant difference in cell viability was observed between pre- and post-isolation samples. The isolated cells were directly applicable to downstream experimental workflows, exhibiting stable and reliable performance.

► Order Information

Species	Cat. No.	Product Name	Sorting Mode	Capacity	
Column based Indirect labeling	K1301-10	Mouse CD3+ Cell Separation Kit (100T)	Positive (Indirect Labeling)	for 1*10 ⁹ total cells	
	K1302-10	Mouse CD4+ Cell Separation Kit (100T)	Positive (Indirect Labeling)	for 1*10 ⁹ total cells	
	K1303-10	Mouse CD8+ Cell Separation Kit (100T)	Positive (Indirect Labeling)	for 1*10 ⁹ total cells	
	K1304-10	Mouse CD45+ Cell Separation Kit (200T)	Positive (Indirect Labeling)	for 2*10 ⁹ total cells	
	K1305-20	Mouse CD19+ Cell Separation Kit (200T)	Positive (Indirect Labeling)	for 2*10 ⁹ total cells	
	K1306-10	CD11b+ (Microglia) cell separation Kit (100T)	Positive (Indirect Labeling)	for 1*10 ⁹ total cells	
	K1307-10	Mouse Pan B Cell isolation Kit (100T)	Negative (Indirect Labeling)	for 1*10 ⁹ total cells	
	K1308-10	Mouse CD4+CD25+ Regulatory T Cell Isolation Kit	Hybrid Labeling	for 1*10 ⁹ total cells	
	K1201-10	Human CD3+ Cell Separation Kit (RUO,100T)	Positive (Indirect Labeling)	for 1*10 ⁹ total cells	
	K1202-10	Human CD4+ Cell Separation Kit (RUO,100T)	Positive (Indirect Labeling)	for 1*10 ⁹ total cells	
	K1203-10	Human CD8+ Cell Separation Kit (RUO,100T)	Positive (Indirect Labeling)	for 1*10 ⁹ total cells	
	K1204-10	Human CD14+ Cell Separation Kit (RUO,100T)	Positive (Indirect Labeling)	for 1*10 ⁹ total cells	
	K1205-10	Human CD45+ Cell Separation Kit (RUO,100T)	Positive (Indirect Labeling)	for 1*10 ⁹ total cells	
	K1206-10	Human CD19+ Cell Separation Kit (RUO,100T)	Positive (Indirect Labeling)	for 1*10 ⁹ total cells	
	K1207-10	Human NK Cell Isolation Kit (RUO,100T)	Negative (Indirect Labeling)	for 1*10 ⁹ total cells	
	K1208-10	Human CD4+CD25+ Regulatory T Cell Isolation Kit	Hybrid Labeling	for 1*10 ⁹ total cells	
	K1209-20	Human CD34 Separation Kit (RUO,200T)	Positive (Indirect Labeling)	for 2*10 ⁹ total cells	
	Column based Direct labeling	B1302-20	Mouse CD4 (L3T4) Nanobeads (RUO,200T)	Positive (Direct Labeling)	for 2*10 ⁹ total cells
		B1303-20	Mouse CD8 (Ly-2) Nanobeads (RUO,200T)	Positive (Direct Labeling)	for 2*10 ⁹ total cells
		B1201-10	Human CD31 NanoBeads (RUO,100T)	Positive (Direct Labeling)	for 1*10 ⁹ total cells
Universal Beads	K1200-10	Streptavidin NanoBeads-100T (Universal)	Positive (Indirect Labeling)	for 1*10 ⁹ total cells	
	B2000-20	Anti-FITC NanoBeads-200T (Universal)	Positive (Indirect Labeling)	for 2*10 ⁹ total cells	
	B2001-10	Anti-PE NanoBeads-100T (Universal)	Positive (Indirect Labeling)	for 1*10 ⁹ total cells	

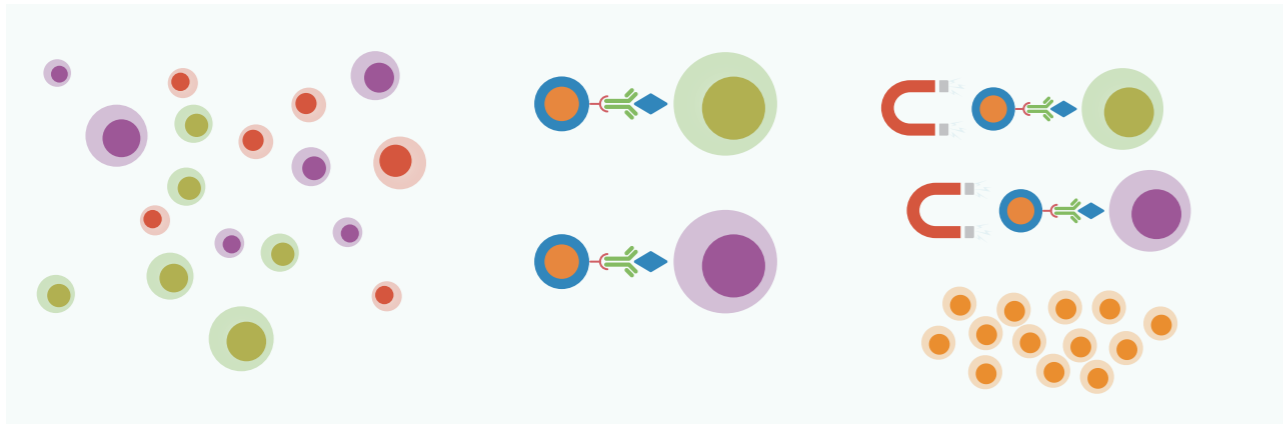
► Consumables and accessories for Column-based products

Species	Cat. No.	Product Name	Size
Consumables (Column-Based)	LSC-S1	LSC Separator (single channel)	1pcs
	SS01	Separation stand	1pcs
	CSAK-01	Cell Separation assembly kit (single channel)	1Set / Includes 1 Box of LarSep Columns (25 pcs) 1 LSC Separator and 1 Separation stand
	HCSC-100	LarSep Columns (4box, 25pcs/box)	100pcs
	HCSC-25	LarSep Columns (25pcs/box)	25pcs
	HCSC-5	LarSep Columns (5pcs/box)	5pcs
	MCSC-25	MedSep Columns (25pcs/box)	25pcs
	MCSC-5	MedSep Columns (5pcs/box)	5pcs
	MSC-S1	MSC Separator (single channel)	1Set

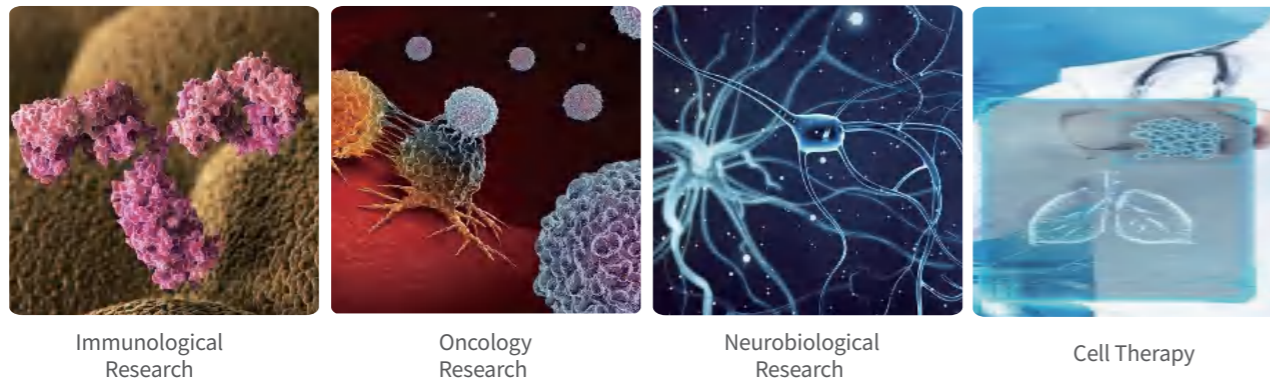
Magnetic Cell Separation System (Column Free)

Magnetic Cell Separation System (Column Free), by adding biotin-antibodies to PBMC or single cell suspension to label non-target cells (negative selection), and then binding streptavidin magnetic beads to labeled non-target cells. The target cells without contact with magnetic beads can be separated quickly, easily and in large numbers.

Product Principle



Product Application



Immunological Research

Oncology Research

Neurobiological Research

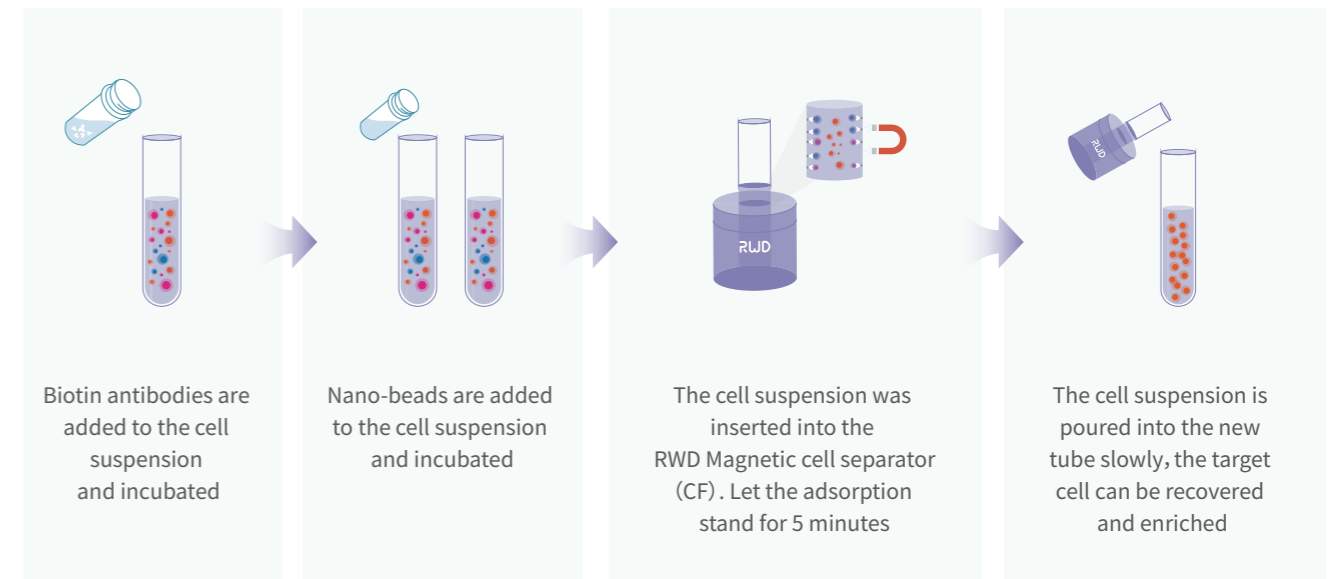
Cell Therapy

Product characteristics



- Nano-Beads — mild & low stimulation
- Magnetic adsorption — strong & sensitive
- Column free — fast sorting & low cost
- Negative sorting — get truly untouched cells
- Wide application — direct cell experiments

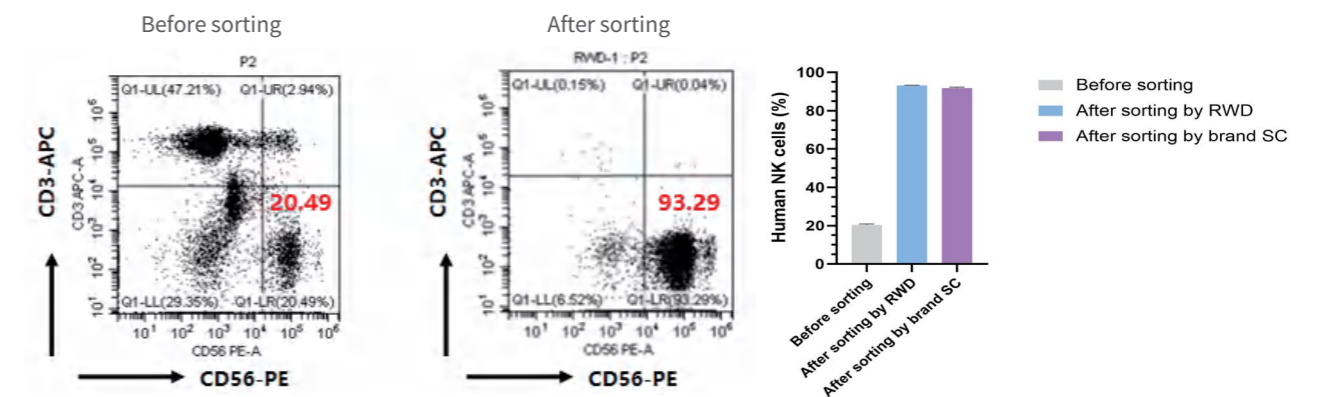
Experimental Process



Data Presentation

Human NK Cell isolation Kit-100T (Column Free, Negative)

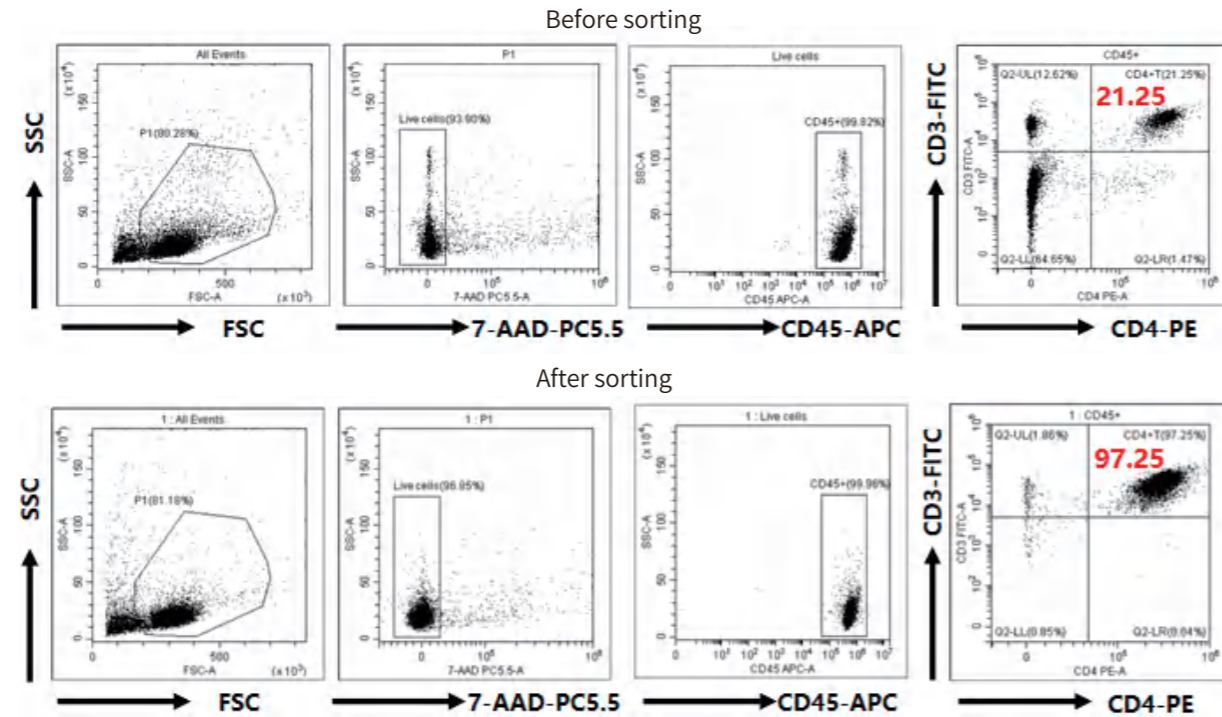
- Sample type: PBMC



Human NK cells were isolated from peripheral blood mononuclear cells (PBMCs) using the Human NK Cell Isolation Kit (F1401-10, RWD). Flow cytometric analysis confirmed that the frequency of NK cells was approximately 20.49% prior to isolation. Following isolation, the purity of the enriched NK cell population reached 93.29%, as determined by gating on viable single cells. No significant difference in cell viability was observed between pre-and post-isolation samples. The isolated cells were directly applicable to downstream applications, and statistical analysis demonstrated consistent performance across batches

Mouse CD4 T Cell Isolation Kit-10T (Column Free,Negative)

- Sample type: C57BL/6J Mouse Spleen



□ CD4+ T cells were isolated from mouse spleens using the Mouse CD4 T Cell Isolation Kit-CF (F1508-10, RWD). Flow cytometric analysis confirmed that the proportion of CD4+ T cells was approximately 21.25% prior to isolation. Following isolation, the purity of the enriched CD4+ T cell population reached 97.25%, as determined by gating on viable single cells. Cell viability was 93.90% before isolation and 96.85% after isolation

▶ Ordering Information

Species	Cat. No.	Product name	Sorting method	Capacity
Mouse	F1501-10	Mouse Pan B Cell isolation Kit-CF (100T)	Negative (Indirect Labeling)	for 1*10 ⁹ total cells
	F1502-10	Mouse NK Cell Isolation Kit-CF (100T)	Negative (Indirect Labeling)	for 1*10 ⁹ total cells
	F1505-10	Mouse Naive CD8 T Cell Isolation Kit-CF (100T)	Negative (Indirect Labeling)	for 1*10 ⁹ total cells
	F1506-10	Mouse Naive CD4 T Cell Isolation Kit-CF (100T)	Negative (Indirect Labeling)	for 1*10 ⁹ total cells
	F1508-10	Mouse CD4 T Cell Isolation Kit-CF (100T)	Negative (Indirect Labeling)	for 1*10 ⁹ total cells
	F1512-10	Mouse CD8 T Cell Isolation Kit-100T	Negative (Indirect Labeling)	for 1*10 ⁹ total cells
Human	F1401-10	Human NK Cell Isolation Kit-CF (RUO,100T)	Negative (Indirect Labeling)	for 1*10 ⁹ total cells
	F1402-10	Human CD8 T Cell Isolation Kit-100T	Negative (Indirect Labeling)	for 1*10 ⁹ total cells
	F1509-10	Human CD4 T Cell Isolation Kit-CF (RUO,100T)	Negative (Indirect Labeling)	for 1*10 ⁹ total cells
	F1510-10	Human CD19 Cell Separation Kit-CF (RUO,100T)	Positive (Indirect Labeling)	for 1*10 ⁹ total cells
	F1511-10	Human CD3 Cell Separation Kit-CF (RUO,100T)	Positive (Indirect Labeling)	for 1*10 ⁹ total cells

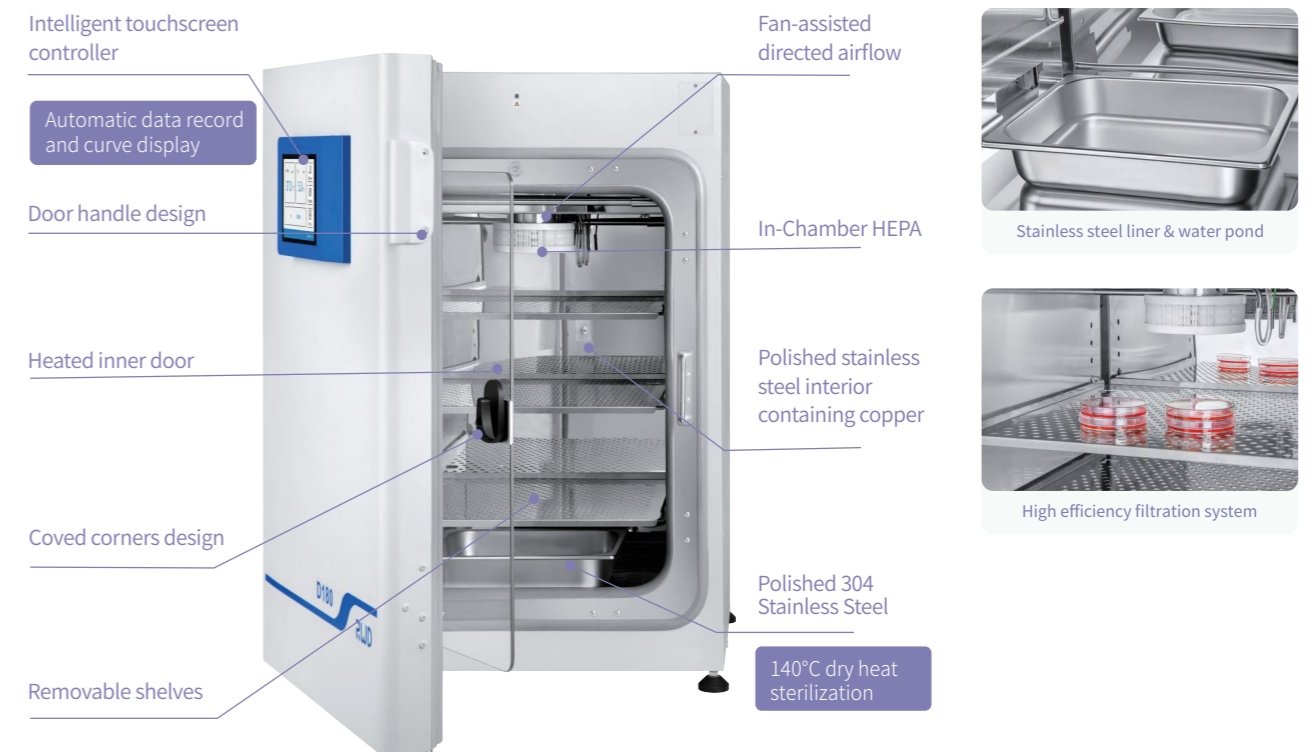
	Cat. No.	Product name	Specification
Accessory	CFMS-S1	Magnetic cell separator-CF (single channel)	1 pcs (Compatible with 5 mL tubes)

CO₂ Incubator

Provide A More Suitable Environment for Cell Culture

CO₂ incubator provides a more suitable culture environment for cells by controlling temperature, CO₂ concentration precisely and by maintaining a high relative humidity (rH). It is an indispensable cell culture tool in the fields of stem cell research, immunology research, neurobiology research and cancer research.

D180H CO₂ Incubator Series



▶ Product characteristics

Stable environment for cell culture

- Accurate IR sensor monitors the CO₂ concentration change.
- Six-sided air jacket heating system ensures fast heating.
- Install humidity probe to monitor real-time humidity changes.

Contamination control of inner chamber

- High efficient sterilization by 140°C dry heat.
- In-chamber HEPA to filter the microorganism.
- Easy cleaning with coved corners and removable shelves design.

Intelligent operation

- 7-inch touchscreen controller for real-time display.
- Automatic data record of 7 days curve display.
- External USB port for fast and convenient data export.

Multiple alarm system

- Internal and external door open overtime alarm.
- Abnormal inner cavity core parameters alarm.
- High temperature sterilization over temperature alarm.

Convenient and flexible design

- Handle design enables a comfortable door opening.
- Optional bracket with casters for convenient moving of the chamber.
- Less consumables in cavity for easy cleaning.

D165H CO₂ Incubator Series



Product characteristics

Upgraded anti-contamination function for more thorough sterilization

The 180°C high-temperature dry-heat sterilization technology can efficiently kill fungi, molds, bacteria, their spores, mycoplasma, etc. It meets pharmacopeia requirements, and has passed third-party verification, ensuring a 99.99% microbial killing rate. The 12-hour process is easy to operate: just remove the HEPA filter, no need to autoclave other accessories separately.

Condensation-free water reservoir design for faster humidity recovery

The 4L integrated reservoir design boosts space utilization and humidity recovery, five times faster than the standard water pan. After a 30-second door opening, relative humidity restored in 10 minutes. The system monitors the water level, refills timely, has a low-humidity mode, and enables easy water operations without moving shelves or cultures.

Flexible low-oxygen control, wider application

Optional oxygen-controlled models can mimic the hypoxic environment of in-vivo cells, facilitating the rapid and healthy growth of primary, stem, and embryonic cells. The oxygen detector, equipped with a durable zirconia sensor, ensures precise and stable O₂ concentration control.

RLink IoT system for more timely alarm response

The RLink intelligent IoT remote monitoring system enables real-time monitoring of equipment status. You can instantly receive anomaly alarms via mobile devices to ensure timely handling and safeguard sample security.

Optional safety door lock for safer high-temperature sterilization

An advanced active safety door lock system is optional. When the high-temperature sterilization program runs, if the temperature exceeds 65°C, the door lock activates automatically to ensure lab staff safety.

New air-flow circulation system ensures rapid recovery of core parameters

A larger HEPA filter paired with an active fan-assisted air-circulation system significantly boosts air-purification efficiency. After the door is open for 30 seconds, ISO 5 (Class 100) air quality is restored in just 5 minutes.

Optional triple small split doors, less environmental impact when opening and closing

Opting for the three inner-door design, only one door leaf opens per operation. This not only reduces air exchange, minimizing internal-chamber environment fluctuations, but also cuts energy consumption, avoiding waste from the frequent door-openings. It also lessens sample interference and contamination risk.

Complies with FDA 21 CFR PART11 for electronic signature and user management

The equipment has a three-level permission system (administrator, operator, visitor) with account-password log-in. Administrators can define permissions and manage users. All critical operations (door opening/closing, password, and setting changes) are recorded with non-alterable and non-deletable electronic signatures for operation traceability.

Accessories for D180 Model

Options	Order no.	Description
CO ₂ intake pipe kit	D180-F01	Pipeline fittings for connecting the equipment to the carbon dioxide gas cylinder
Horizontal partition and its hanging rod	D180-F02	Used for placing experimental samples
Humidification water tray	D180-F03	Maintains the humidity inside the chamber
HEPA filter	D180-F04	Maintains ISO 5 - class air cleanliness inside the chamber
High - efficiency filter	D180-F05	Used for filtering at the gas sampling port at the rear of the equipment
Stacking machine lock assembly	D180-F06	Used to fix two devices when stacked
Caster - equipped bracket	D180-F07	Facilitates the movement of the equipment, with a maximum load - bearing capacity of 200 kg
Carbon dioxide gas pressure reducing valve	D180-F08	Used to adjust the pressure of the carbon dioxide gas cylinder

Accessories for D165H/D165HT Model

Options	Order no.	Description
HEPA filter	D165H-F01	Maintain ISO 5 - class air cleanliness in the inner cavity.
High - efficiency filter	D165H-F02	Filter for the equipment's gas inlet.
Horizontal partition and its hanging rod	D165H-F03	Used to place experimental samples.
Small - sized horizontal partition and its hanging rod	D165H-F04	The horizontal partition for the bottom layer, including a horizontal shelf and its two hanging rods.
Three - small - door inner door module	D165H-F05	The inner door with three air - tight small doors reduces the impact on the environment when the door is opened.
Caster - equipped bracket	D165H-F06	Facilitates the movement of the equipment, with a maximum load - bearing capacity of 200 kg.
Stacking machine lock assembly	D165H-F07	The lock assembly used to fix two stacked devices.
Safety door lock	D165H-F08	The door lock that automatically locks the outer door when the temperature exceeds 65°C during high - temperature sterilization to prevent it from being accidentally opened.
Carbon dioxide gas pressure reducing valve	D165H-F09	Used to adjust the pressure of the carbon dioxide gas cylinder.
Nitrogen pressure reducing valve	D165H-F10	Used to adjust the pressure of the nitrogen gas cylinder.

Ordering Information

Options	Model	Description
CO ₂ Incubator with Humidity monitoring	D180/D181	volume 188L; 140°C setrization; humidity sensor; voltage 100~120VAC, 60H2, 10A
CO ₂ Incubator	D165H	volume 170L; 180°C setrization; voltage 100~120VAC, 60H2, 10A
CO ₂ Incubator with oxygen module	D165HT	volume 170L; 180°C setrization; with oxygen module; voltage 100~120VAC, 60H2, 10A

► Technical Parameters

	Model	D180	D165H	D165HT
Dimensions & Weight	Cavity volume	188 L	170 L	
	Internal dimensions	51.0(W) × 54.7(D) × 67.5(H) cm		47.0(W) × 57.0(D) × 60.0(H) cm
	Water reservoir			33(W) × 41.5(D) × 6.9(H) cm
	External dimensions	69.5(W) × 67.0(D) × 97.0(H) cm		69.0(W) × 86.0(D) × 90.0(H) cm
	Weight	110 kg	120 kg	
Shelves	Standard quantity	4	3	
	Maximum quantity	17	11	
	Dimensions	48.7 × 46.1 cm		41.8 × 46.5 cm
	Area	2245 cm ²		1943.7 cm ²
	Load - bearing capacity	20 Kg/pcs		
Power	Maximum power consumption	1100 W	1300 W	
	Heating power	300 W	510 W	
	Stable function power (@37°C)	30 W	16 W	
Temperature	Heating method	Air-Jacket Heating Method		
	Sensor	Pt1000		
	Controller	PID		
	Control accuracy and range	±0.1°C at 37°C, RT + 5°C - 50°C		±0.1°C at 37°C, RT + 3°C - 55°C
	Uniformity	±0.3°C at 37°C		±0.25°C at 37°C
CO ₂ Concentration	Control accuracy and range	±0.1%@5%, 0 ~ 20%		
	Sensor	IR		
	Input pressure	0.1 ~ 0.15 Mpa		0.1 ~ 0.15 Mpa
	Reading and setting ability	0.1%		
Humidity	Humidification method	Water Pan	Water Reservoir	
	Relative humidity	≥ 90%	≥ 93% (Normal Mode)	
	Volume	3.8 L	3.8 L	
	Display	1% RH	Water level display	
O ₂ Concentration	Control accuracy and range	/		±0.1%, 0.1% - 21% (hypoxia)
	Sensor	/		Zirconia
	Input pressure	/		Recommended pressure: 0.08 - 0.1 Mpa
Sterilization	Sterilization temperature	140°C dry heat sterilization	180°C dry heat sterilization	
	Sterilization time	12 hours	12 hours	
	Filter	HEPA High - Efficiency Particulate Air Filter		
Safty	Temperature alarm setting	Users can customize it. Upper limit: (T + 0.1) ~ (T + 5.0); Lower limit: (T - 0.1) ~ (T - 5.0)		
	CO ₂ alarm setting	Users can customize it. Upper limit: (T + 0.1) ~ (T + 1.0); Lower limit: (T - 0.1) ~ (T - 1.0)		
	Humidity alarm setting	Default lower limit: 75%, customizable	Low water level alert	
	O ₂ alarm setting	/		Users can customize it. The upper limit ranges from (T + 0.1) to (T + 1.0); the lower limit ranges from (T - 0.1) to (T - 1.0).
	Door - opening alarm setting	An alarm will be triggered 2 minutes after the door is opened.		
	Safety door lock	/		Optional safety lock engages automatically at over 65°C during sterilization.

Automated Cell Counter

RWD Automated Cell Counter adopts Trypan Blue staining method, intelligent image recognition and advanced optical imaging technology to achieve accurate and automatic cell analysis. The algorithm can identify both live and dead cells within 9 seconds. Information such as cell counts, viability, diameter can be obtained by just one-click. With fluorescence cube, C100 and C200 can display images in BF and FL channels simultaneously and clearly present cell counts and cell morphology.



C100-SE



C100

► Product Characteristics

High accuracy

- The self-developed algorithm can identify clustered cells.
- Intelligently cell marks contribute to precise cell recognition.
- RBC counting.
- Low autofluorescence and high-transmit filter enable clear imaging.

Time-saving

- User-friendly UI and built-in user guide interfaces ensure easy operation.
- Up to 1000 counting results can be stored. No need another device for extra storage.

User-friendly

- Autofocus and auto exposure.
- Powerful computing capability ensures high efficiency.

Compact design

- Compact size fits into different placements.
- Removable modular FL cubes allow easy switches among various scenes.

► Accessories and consumables



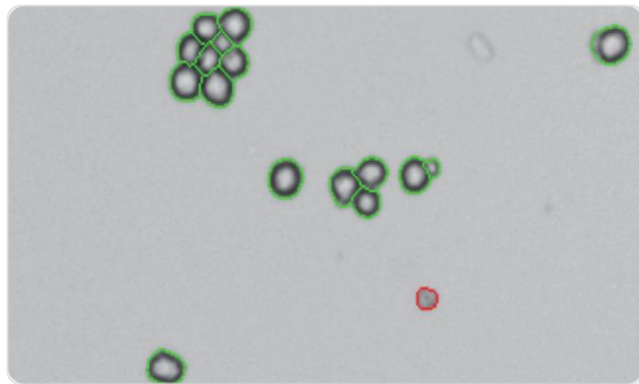
Disposable Cell Counting Slide



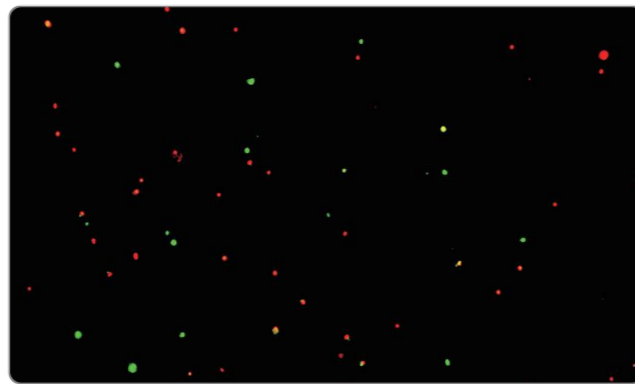
FL Cube



Reusable Counting Slide



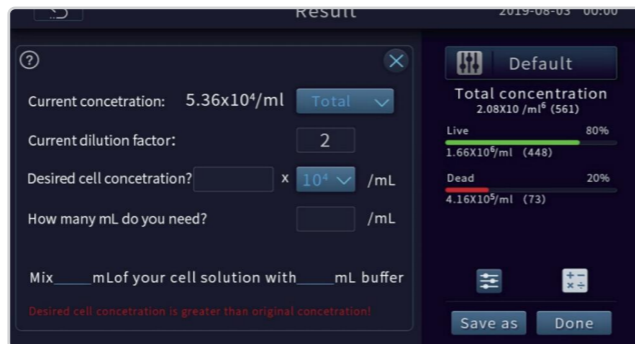
Clustered cell recognition algorithm



Clear fluorescence imaging



Pre-dilution calculator



Cell splitting calculator

► Technical Parameters

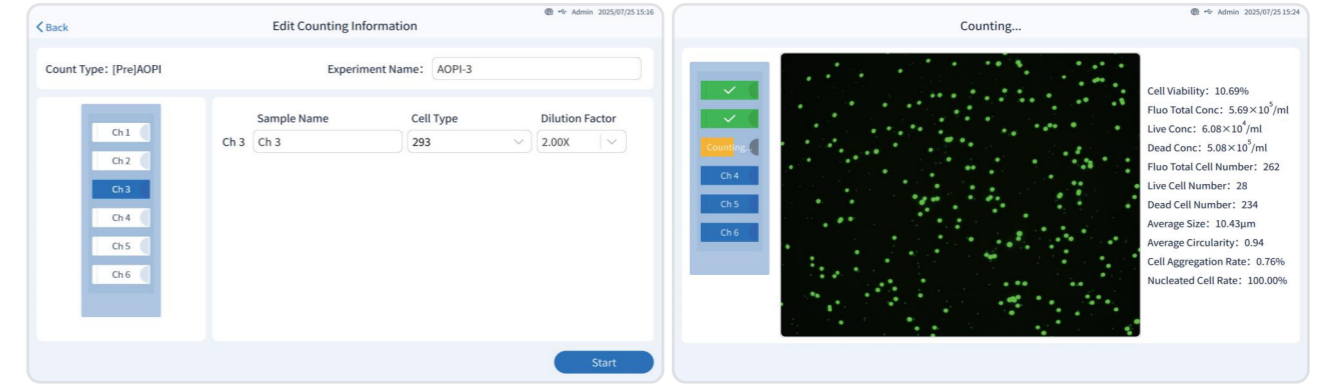
Parameters	Description	
Model	C100-SE	C100
Optional fluorescence application	N/A	● (Ex :375/28nm ;Em:460/50nm)
		● (Ex :480/30nm ;Em:535/40nm)
		● (Ex :540/25nm ;Em:620/60nm)
Amplification Factor	2.5×, 5.0 Megapixel	
Focus Method	Manual focusing & Autofocusing	
Counting Area	2.15 mm×1.62 mm	
Cell Type	Cell lines, stem cells, primary cells, pollens, beer yeast	
Cell Size Range	4-60 μm (Optimal: 7-60 μm)	
Cell Concentration Range	104-107 cells/mL	
Cell counting Time	Less than 9s	
Historical Data Storage	1000 counting reports and images at most	
Languages	Chinese and English	
Dimensions	212m(W)*165mm(D)*264mm(H)	
Weight	~3.0kg	~3.2kg

FL Cube	Excitation	Emission	General Dyes
FL Cube-01	375/28nm	460/50nm	DAPI, Hoechst, BFP
FL Cube-02	480/30nm	535/40nm	Acridine Orange (AO) , Calcein-AM, Alexa fluor 488, SYBR Green, FITC, GFP
FL Cube-03	540/25nm	620/60nm	Propidium Iodide (PI) , DsRed, dTomato, RFP

► Order Information

Cat No.	Product Description
C100-SE	Automated Cell Counter (BF)
C100	Automated Cell Counter (BF + FL)
FL Cube-01	● (Ex: 375/28nm; Em: 460/50nm)
FL Cube-02	● (Ex: 480/30nm; Em: 535/40nm)
FL Cube-03	● (Ex: 540/25nm; Em: 620/60nm)
DS-50	Disposable Slide (50 pcs/box)
RS-100	Reusable Counting Slide (1pcs/box)

Fluorescent cell counter C200FL



6-channel automatic sampling

Real time display of counting results

Product Characteristics

More precise, more stable

- No need to focusing and the imaging is clearer
- Preset parameters can be used directly without manual operation
- Intelligently cell marks for precise cell recognition
- Low autofluorescence and high-transmit filter enable clear imaging

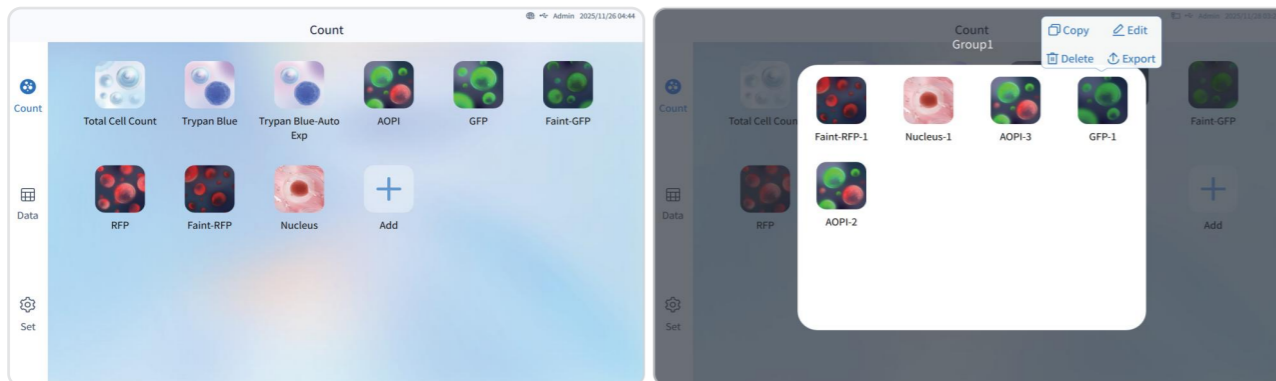
Smarter and more efficient

- APP style program, one click counting
- 6-channel counting slide, automatic sampling
- Optional 1-3 counting area, 5s/sample
- 500G storage, one click export multiple formats of data

Safer and easier to use

- FDA 21 CFR Part 11 compliance
- Multiple built-in help interfaces, easy to use
- Compact size fits into different placements

Product Interface



APP style program, one click counting

APPs can be managed in group

Consumables

6-channel disposable counting slide for C200FL cell counter

- One-piece cover plate, no cover glass required
- Disposable consumables, no manual cleaning
- Disposable design to avoid biological safety hazards
- Separate and easy-to use packaging



Parameters	Description
Model	DS-66
Chamber volume	10μL/20μL
Number of chambers	6
Dimensions of slide	75mm*25mm*2.1mm
Dimensions of chamber(10uL)	16.85mm*6.05mm*0.1mm
Dimensions of chamber(20uL)	16.85mm*6.05mm*0.2mm
Package	50PCS/box

Technical Parameters

Model	C200FL
Optical parameters	5×, 5.0 Megapixel
Fluorescence parameters	AO/GFP: Ex: 480/30nm, Em: 535/40nm PI/RFP: Ex: 525/30nm, Em: 590LP
Cell size range	1-200μm (Optimal: 5-30μm)
Cell concentration range	1×10 ⁴ - 3×10 ⁷ /mL
Counting area	1.72mm×1.3mm (Optional 1-3 zones)
Cell counting time	5s/sample (bright field)
Storage	500G
Dimensions	310mm(W)*262mm(D)*420mm(H)
Weight	~11KG
Languages	Chinese and English
Display	10.1-inch LCD touch screen
Consumables	6-channel counting slide, 10μL or 20μL/sample

Centrifuge

M1324R Refrigerated Microcentrifuge

RWD microcentrifuges M1324R and M1324 simplify centrifugation, which can work stably and quietly at the maximum speed of 15800rpm. Optional rotors for different needs (PCR tubes, 1.5/2 mL EP tubes, etc.). Small footprint and low noise, touch screen interaction, all your user-defined preset programs can be called by one click. The refrigerated microcentrifuge M1324R will still make sure the stable temperature centrifugation of samples at -10°C~40°C even at the highest speed. All the functions are designed according to your needs, which is the best choice for laboratory separation.



M1324R Microcentrifuge

Product Characteristics

Efficient

- Quick precooling. From RT to 4 °C in only 8 minutes.
- The seamlessly fit for inner cavity winding technology enables high-efficient energy transfer.
- Adjustable 10 ACC/DEC ramps to satisfy different customers' needs.

Stable and Safe

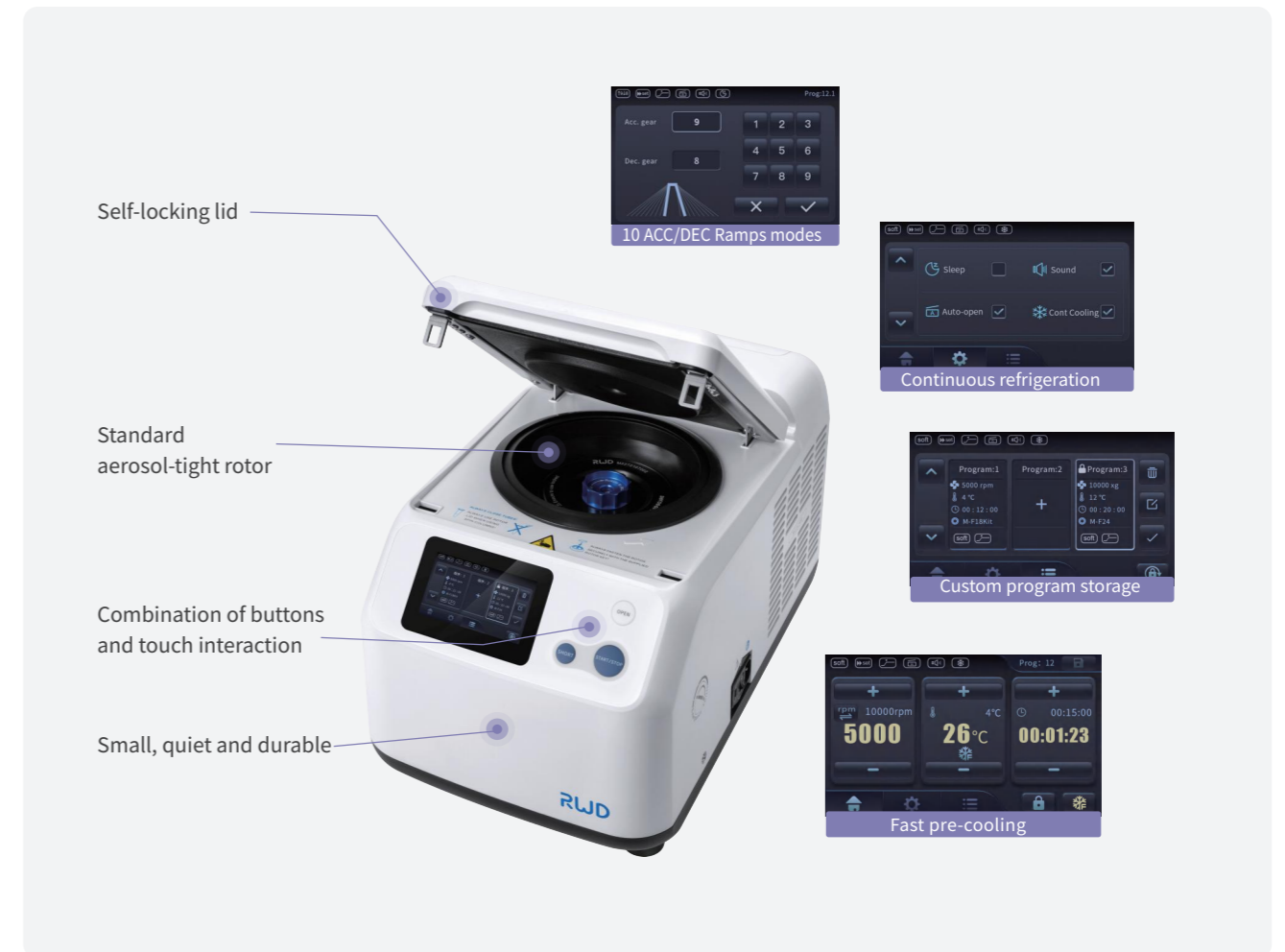
- High-density foaming technology benefits energy-saving and heat-preservation.
- Standard aerosol-tight rotor with aerospace-grade aluminum alloy withstands high temperature sterilization and avoids biohazards.
- Qualified ultrasonic non-destructive test, Schenck balancing test and extreme blasting test to protect personnel safety.
- Multiple Real-time rotor dynamic balancing monitoring system and alarm functions guarantee safe operation.

Simple

- Combination of touch screen and function keys provides quick and convenient setting and parameter use.
- 12 custom programs enable immediate centrifuge operation in multiple scenarios.
- Magnetic condensed water collection pan to eliminate inner water accumulation.
- Mechanical lock design for the centrifuge lid enables easy opening and closing.
- Quick-Lock rotor, closes with only a 1/4 turn.

Compact

- One-pipette-width compact design.
- Lid hinge design with suspending hovering optionally.



M1324 Ventilated Microcentrifuge



M1324 Microcentrifuge

▶ Product Characteristics

Excellent and Efficient

- Unique heat dissipation material and duct design to enhance heat dissipation performance.
- Double cooling system to ensure stable centrifugation of samples at the highest speed.
- Running vibration amplitude $\leq 1\mu\text{m}$ to maintain stable operation.

Stable and Safe

- Standard aerosol-tight rotor with aerospace-grade aluminum alloy withstands high temperature sterilization and avoids biohazards.
- Qualified ultrasonic non-destructive test, Schenck balancing test and extreme blasting test to protect personnel safety.
- Real-time rotor dynamic balancing monitoring system and multiple-imbalance alarm functions guarantee safe operation.

Intelligent and Quiet

- Dual noise control system with intelligent three-gear fan control, full load at maximum speed noise $< 50\text{dB(A)}$.
- Combination of touch screen and function keys provides quick and convenient setting and parameter use.
- Use EPP foam material to reduce noise pollution.

Simple and Practical

- Quick-lock rotor closes with only 1/6 turn for easy and secure sample handling.
- 10 acceleration and deceleration ramps meet the centrifugation needs of different samples.
- 48 custom programs enable immediate centrifuge operation in multiple scenarios.
- Automatic lid opening design, easy and quick to take samples.

▶ Technical Parameters

Parameters	M1324R	M1324
Max. Speed	15800 rpm	
Max. RCF	23444 × g	
Max. Capacity	5mL × 10	
ACC/DEC Ramps	10/10	
Display	Touch screen	
Program	12	48
Temperature Control	-10°C to 40°C	/
Noise Level	<54dB (A)	<50dB(A)
Dimension (W*H*D)	304mm*304mm*517mm	262mm*286mm*385mm
Weight (with rotor)	35.5kg	~22.5kg

▶ Order Information

Model	Product Description	Maximum Speed (rpm)	Maximum RCF(xg)
M1324	Ventilated Microcentrifuge(With M-F24QGrotor)	15,800	23,444
M1324R	Refrigerated Microcentrifuge (M-F24QGrotor)	15,800	23,444
M-F10QG	Aerosol-tight Lid , 10X5 mL tube quicklock rotor	15,800	23,444
M-F24QG	Aerosol-tight Lid , 24X1.5/2.0 mL tube quick- lock rotor	15,800	23,444
M-F24Q	24X1.5/2 mL tube quick-lock rotor	15,800	23,444
M-F24G	Aerosol-tight Lid, 24 X1.5/2 mL tuberotor	15,800	23,444
M-F24	24X1.5/2 mL tube rotor	15,800	23,444
M-F4PCR	4 X PCR tube rotor (32×0.2 ml)	15,800	20,653
M-F18Kit	18 X Spin column rotor	15,800	20,095

M1416/M1416R High-Speed Benchtop Centrifuge

RWD High-Speed Benchtop Centrifuge provides intelligent centrifugation, adapting various applications from micro to medium throughput with a speed up to 18,000 rpm (31,152 × g). Offer a broad selection of rotors and adaptors (swing-bucket rotors and fixed-angle rotors) to meet different customers' needs. The capacity of M1416R ranges from 24 x 2mL to 4 x 400mL, and the plate rotor also accommodates PCR and deep-well plates. In addition, equipped with a 7-inch touch screen, M1416R provides visual operation and a personalized account management system ensuring efficient and quality control.

▶ Product Characteristics

Abundant accessories

- Multi-purpose device equips with various rotors and adaptors.
- Self-locking rotors enable non-tools required installation and removal and exchange in 3 seconds.
- Fixed-angle rotor equipped with the quick-lock lid, closes with only a 1/6 turn.

Various guarantees

- Multi-level alarm reminders for fast dealing.
- Static rotor identification function for maximum operational safety.
- Precision assembly motor with special bearings ensures the precision of speed $\leq \pm 1\text{rpm}$, amplitude $\leq 0.01\text{mm}$.

Ergonomic operation

- Scheduling reservations provide the pre-cooling function for organized experiments.
- Acceleration and braking ramps setting achieves stable centrifugation.
- Built-in simple introduction for quick operation.

Multipurpose function

- An intuitive touch screen shows key parameters clearly.
- View the centrifuge health with one click.
- Front USB port for easy and quick data transfer.
- More than 100 pre-program setting storage with customized steps achieves continuous centrifugation.



M1416R

M1416



► Technical Parameters

Parameters		M1416R High-Speed Benchtop Refrigerated Centrifuge	M1416 High-Speed Benchtop Centrifuge
Swing-out Rotor	Maximum Capacity	4*400mL	
	Maximum Speed	7,200rpm	
	Maximum RCF	7188xg	
Fixed-angle Rotor	Maximum Capacity	6*100mL	
	Maximum Speed	18,000rpm	
	Maximum RCF	31,152xg	
Acceleration/Deceleration ramps		9/10	
Program Storage		100 programs with the ability to do step programming	
Temperature range		-10°C to +40°C	Room tempture
Noise		58dB(A)	63dB(A)
Dimension (W*D*H)		620*670*400 mm	450*690*410 mm
Weight without rotor		96.5 kg	64 kg

► Order Information

Model	Product Description
M1416R	High-Speed Benchtop Refrigerated Centrifuge (Without Rotor)
M1416	High-Speed Benchtop Centrifuge (Without Rotor)

► Rotor Information

Model	Product Description	Maximum Speed (rpm)	Maximum RCF(xg)
M-S4-400-P	4*400mL Swing-out rotor	5000	4696
M-S4-400-CP	4*400mL Swing-out rotor (incl. 4*M-A4-50 and 4*M-A9-15 adaptors)	5000	4696
M-S2-DWP-P	2*3 Standard 96-well plate (2*1 DWP)	4000	2272
M-F24-2QG	Aerosol-tight Lid , 24X2 mL tube quick- lock rotor	18,000	30,000
M-F30-2QG	Aerosol-tight Lid , 30X2 mL tube quick- lock rotor	15,200	25,830
M-F48-2QG	Aerosol-tight Lid , 48X2 mL tube quick- lock rotor	15,200	25,314
M-F18-5QG	Aerosol-tight Lid , 18X5 mL tube quick- lock rotor	15,000	24,652
M-F6-50QG	Aerosol-tight Lid , 6X50 mL tube quick- lock rotor	12,100	20,133
M-F30-15C	30X15 mL tube clinic rotor	5650	4997

► Adapter Information

Model	Product Description	Tube specifications (Ø x L, mm)
M-A1-225	Suitable for M-S4-400 rotors, 1*225mL bottle	80 x 125
M-A4-50	Suitable for M-S4-400 rotors, 4*50mL tub	62 x 125
M-A9-15	Suitable for M-S4-400 rotors, 9*15mL tubes	30 x 116
M-A14-10	Suitable for M-S4-400 rotors, 14*10mL blood collection	17 x 121
M-A19-7	Suitable for M-S4-400 rotors, 19*5/7 mL blood collection	16 x 113
M-A28-2	Suitable for M-S4-400 rotors, 28*2mL tubes	13 x 110
M-A-15	Suitable for M-F6-50QG rotor, 6*15mL adapters	11 x 45
M-A-7	Suitable for M-F30-15C rotor, 10*5/7ml blood vessel collection adapters	16 x 113
M-A6-50	Suitable for M-F6-100CF, 6*50mL adapter	62 x 125
M-A6-15	Suitable for M-F6-100CF, 6*15mL adapter	30 x 116

High-Speed Refrigerated Centrifuge

Make Your Centrifugation Intelligent MX30R



Application Scenario

Delivering efficient, reliable, and user-friendly centrifugation solutions for scientific research and bioprocessing

- Biological Research & Pharmaceutical Development:**
 From large-volume culture harvesting to high-speed, small-volume protein/antibody purification for complete R&D workflows
- Cell Biology, Molecular Biology & Proteomics:**
 Precipitation and separation of proteins, exosomes, nucleic acids (DNA/RNA), and subcellular organelles; density gradient centrifugation.
- Virology & Nanotechnology:**
 High-speed pelleting of viruses, viral particles, and nanoparticles using rotors reaching 31,000 rpm.
- Production Bioprocessing:**
 Scale-up from research to production for harvest and clarification using large-capacity rotors.
- Diagnostics & Clinical Biochemistry:**
 Clinical blood separation with rotors compatible with bloodcollection tube adapters.

Product Characteristics

Diverse Rotor Options

- Versatile Rotors:** Horizontal, fixed-angle, and continuous-flow rotors for diverse applications.
- Carbon Fiber Innovation:** Lightweight, fatigue-resistant, and durable. Achieves 17,000 × g with 6x1000mL loads.
- High-Strength Titanium:** Supports 8x50mL (100,000 × g) and 6x50mL (110,000 × g) configurations.



Unmatched Safety

- Self-locking and auto-recognition rotors prevent risks from improper installation or misuse.
- A triple-layered, reinforced chamber protects against operational hazards.
- Fixed-angle rotors feature a leak-containment design to secure spilled samples and avoid cross-contamination.
- A optional HEPA filter ensures all exhaust air is purified of aerosols.

Intelligent Control System

- Features both routine centrifugation and ACE integral modes, with ACE technology ensuring consistent results across runs
- Includes a built-in rotor calculator for quick conversion of speed and time between different rotors
- Operates via a durable 7-inch touchscreen that supports gloved use, offering intuitive operation with high clarity in a fully button-free interface
- Supports GMP/GLP compliance with a built-in audit trail and seamless USB export of complete centrifugation data records

Effortless Convenience

- Tool-free, push-button rotor locking enables secure installation and changes within 3 seconds.
- Three door-opening options, including innovative hands-free foot-sensor operation.
- An adaptive vacuum system can engage either pre-centrifugation or after reaching set speed.
- Multi-layer sound insulation ensures quiet operation (<59 dBA) for a peaceful lab environment.



User Management

Account login with password and role-based access control

Parameter Configuration

Quick and intuitive setting of operational parameters

Rapid Pre-cooling

Fast pre-cooling function to enhance centrifugation efficiency

Rotor Identification

Automatic rotor recognition for reduced setup time

Run Status

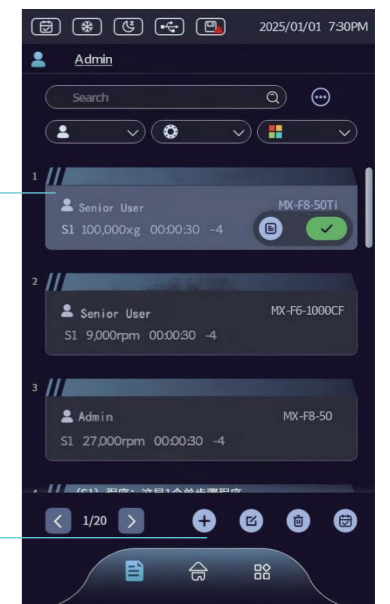
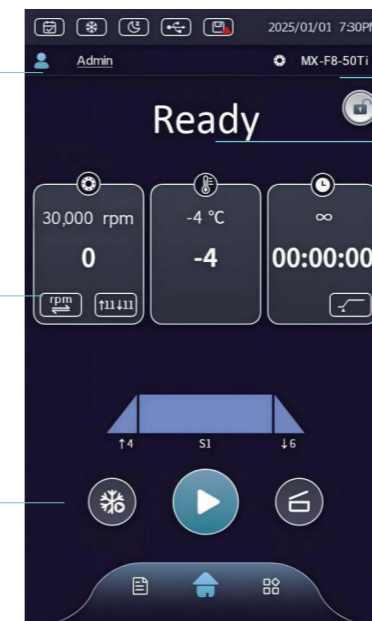
Real-time display of operation status for clear monitoring

Program Setup

Intuitive interface for easy creation and execution of protocols

Program Management

Smart and simplified operation for diverse program management needs



qTouch Western Blot Imager

Not available in the U.S.

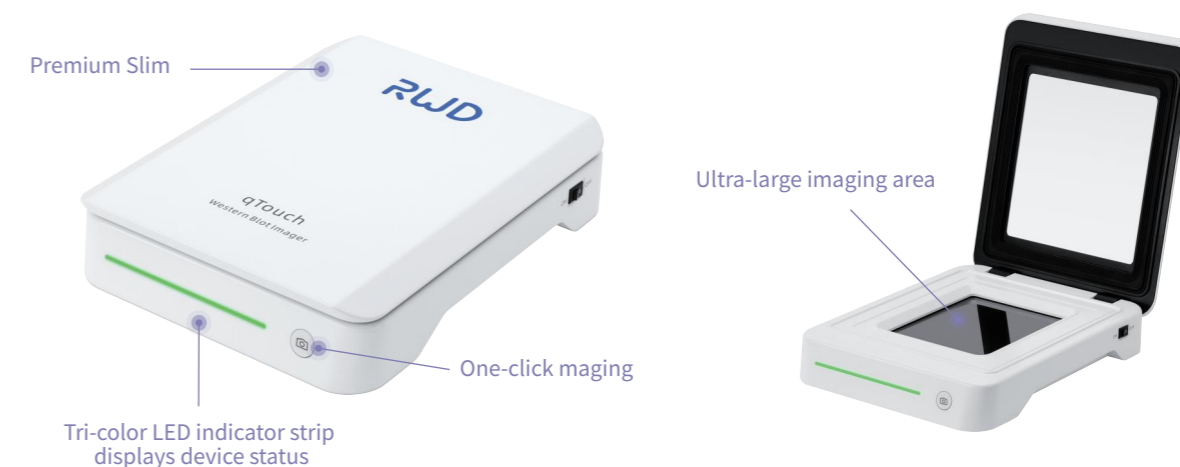
► Technical Specifications

Model	MX30R High-Speed Refrigerated Centrifuge
Max. RCF (×g)	110,000×g (MX-F6-50Ti)
Max. Speed (rpm)	31,000 rpm
Max. Capacity	6×1000mL (MX-F6-1000CF)
Rotor Recognition	Instant automatic identification
Rotor Locking	Self-locking
Vacuum System	Intelligent vacuum extraction
Display	7-inch full-color touch screen, 800×480px resolution
Temperature Range	-20°C to +40°C
Temperature Accuracy	±2°C
Acceleration/Deceleration	12 acceleration / 13 deceleration rate selections
Speed Control Accuracy	±25 rpm
Program Storage	1000 run programs
Noise Level	<59dB(A)
Dimensions (W×D×H)	950mm680mm670mm
Weight (without rotor)	300kg

► Order Information

Name	Model	Capacity(mL)	Max Speed (rpm)
High-Speed Refrigerated Centrifuge	MX30R	6*1000	31,000
MX-S4-1000 Swing-out Rotor	MX-S4-1000-P	4*1000	5,500
MX-F6-1000CF Carbon Fiber Rotor	MX-F6-1000CF	6*1000	9,000
MX-F6-50Ti Titanium Alloy Rotor	MX-F6-50Ti	6*50	31,000
MX-F8-50Ti Titanium Alloy Rotor	MX-F8-50Ti	8*50	30,000
MX-F8-50 Aluminum Alloy Rotor	MX-F8-50	8*50	27,000
MX-F6-500CF Carbon Fiber Rotor	MX-F6-500CF	6*500	12,000
MX-F6-100CF Carbon Fiber Rotor	MX-F6-100CF	6*100	23,500
MX-F12-50CF Carbon Fiber Rotor	MX-F12-50CF	12*50	20,000
MX-F48-2CF Carbon Fiber Rotor	MX-F48-2CF	48*2	23,000
MX-CF20 Continuous Flow Rotor	MX-CF20	1350	20,000

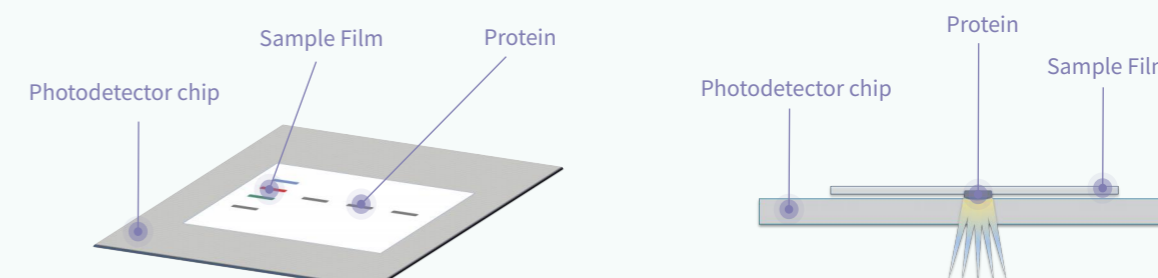
RWD qTouch Western Bolt Imager consists of a main unit and a computer, and is a contact imaging device with a large 145 cm² photoreceptive chip. It is capable of non-destructively collecting light signals from Western Blot, Southern Blot, and Northern Blot. The device has a wide quantitative linear range, capable of capturing both strong and weak signal samples, and the imaging speed is extremely fast, with most samples being imaged within 1 second. The software that comes with it is comprehensive, supporting automatic and manual exposure as well as gray level analysis of Western Blot bands, and is also capable of processing and exporting analysis results of up to 40 images. In addition, the device also has multi-user management functions, allowing users to set personalized file saving paths to ensure data security and convenience. Despite its powerful functions, the device is compact in size, occupies little space, and is easy to transport and carry.



► Product characteristics

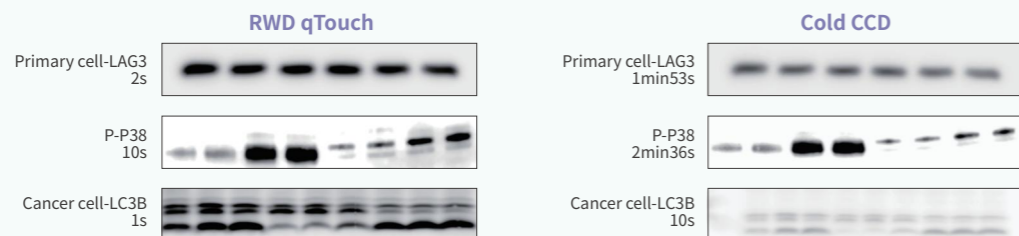
High Sensitivity

- Imaging with direct contact between the photodetector chip and the sample membrane.
- Reduces light signal loss by more than 99%, capturing extremely weak signals.
- Improves sensitivity and quantitative range by two orders of magnitude.
- Three sensitivity levels for adjustment to fit a wider range of samples.



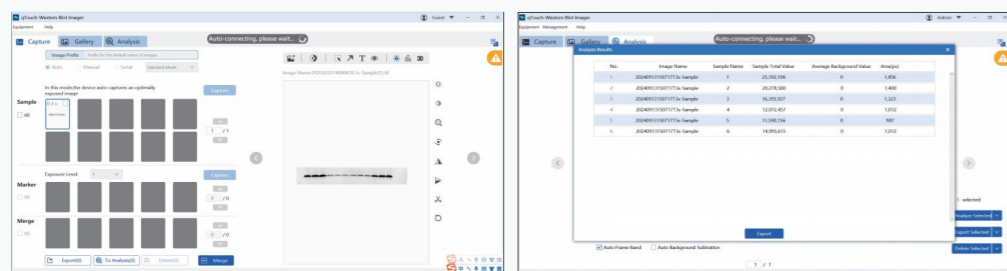
Rapid Imaging

- Versatile exposure modes, with a transmission speed greater than 1000Mbps for rapid image output.
- Most samples can achieve high-quality imaging within 1 second.
- Significantly reduces the time required for collecting low-abundance samples.
- Custom image algorithms ensure high-quality images.



Intelligent Operation

- The operation software is easy to use, feature-rich, and stable.
- The device has a cover closure darkroom detection feature to ensure image quality.
- It has built-in image processing and analysis capabilities, allowing for one-click band recognition.
- A multi-level account system manages the data, with separate data storage for each account.



Technical Parameters

Parameters	Description
Imaging Area Size	145cm ²
Device Power	Powered by a DC12V adapter
Device Interface	USB3.0
Transfer Speed	Greater than 1000 Mbps
Sensitivity	At the pg level
Dimensions (W*D*H)	216*270*66 mm
Weight	<3.25kg
Host Compatibility	Windows10,64bit

Software Configuration	Description
Expose Mode	Automatic/Manual
Sensitivity Adjustment	Low Sensitivity/Standard/Ultra-High Definition in three levells
Imaging Algorithm	Self-developed image correction algorithm
Image Processing	Image cropping, rotation, inversion, contrast adjustmentt, etc.
Data Processing	High-precision intelligent band grayscale analysis
Image Output	Export in multiple resolutions: 300dpi, 600dpi, 1200dpi
Data Management	Multi-level account system automatically generates an irmware database
Other Features	3D image viewing, overexposure warning, etc.

Copyright ©RWD Life Science Co., LTD. 2025. All rights reserved.

No part of this document maybe reproduced or transmitted in any form or by any means without prior written consent of RWD Life Science Co., LTD.

Trademark Notice

RWD, RWD瑞沃德, and RWD are trademarks or registered trademarks of RWD Life Science Co., LTD.

Other trademarks, product, service and company names mentioned are the property of their respective owners.

General Disclaimer

The information in this document may contain predictive statements including, without limitation, statements regarding the future financial and operating results, future product portfolio, new technology,etc. There are a number of factors that could cause actual results and developments to differ materially from those expressed or implied in the predictive statements. Therefore, such information is provided for reference purpose only and constitutes neither an offer nor an acceptance. RWD may change the information at any time without notice.